

StoPowerwall®ci

Commercial

Frame Construction

Series 63s.xx

Insulation Outbound

March 2016

ATTENTION

Sto products are intended for use by qualified professional contractors, not consumers, as a component of a larger construction assembly as specified by a qualified design professional, general contractor or builder. They should be installed in accordance with those specifications and Sto's instructions. Sto Corp. disclaims all, and assumes no, liability for on-site inspections, for its products applied improperly, or by unqualified persons or entities, or as part of an improperly designed or constructed building, for the nonperformance of adjacent building components or assemblies, or for other construction activities beyond Sto's control. Improper use of Sto products or use as part of an improperly designed or constructed larger assembly or building may result in serious damage to Sto products, and to the structure of the building or its components.

STO CORP. DISCLAIMS ALL WARRANTIES EXPRESSED OR IMPLIED EXCEPT FOR EXPLICIT LIMITED WRITTEN WARRANTIES ISSUED TO AND ACCEPTED BY BUILDING OWNERS IN ACCORDANCE WITH STO'S WARRANTY PROGRAMS WHICH ARE SUBJECT TO CHANGE FROM TIME TO TIME. For the fullest, most current information on proper application, clean-up, mixing and other specifications and warranties, cautions and disclaimers, please refer to the Sto Corp. website, www.stocorp.com.

www.stocorp.com

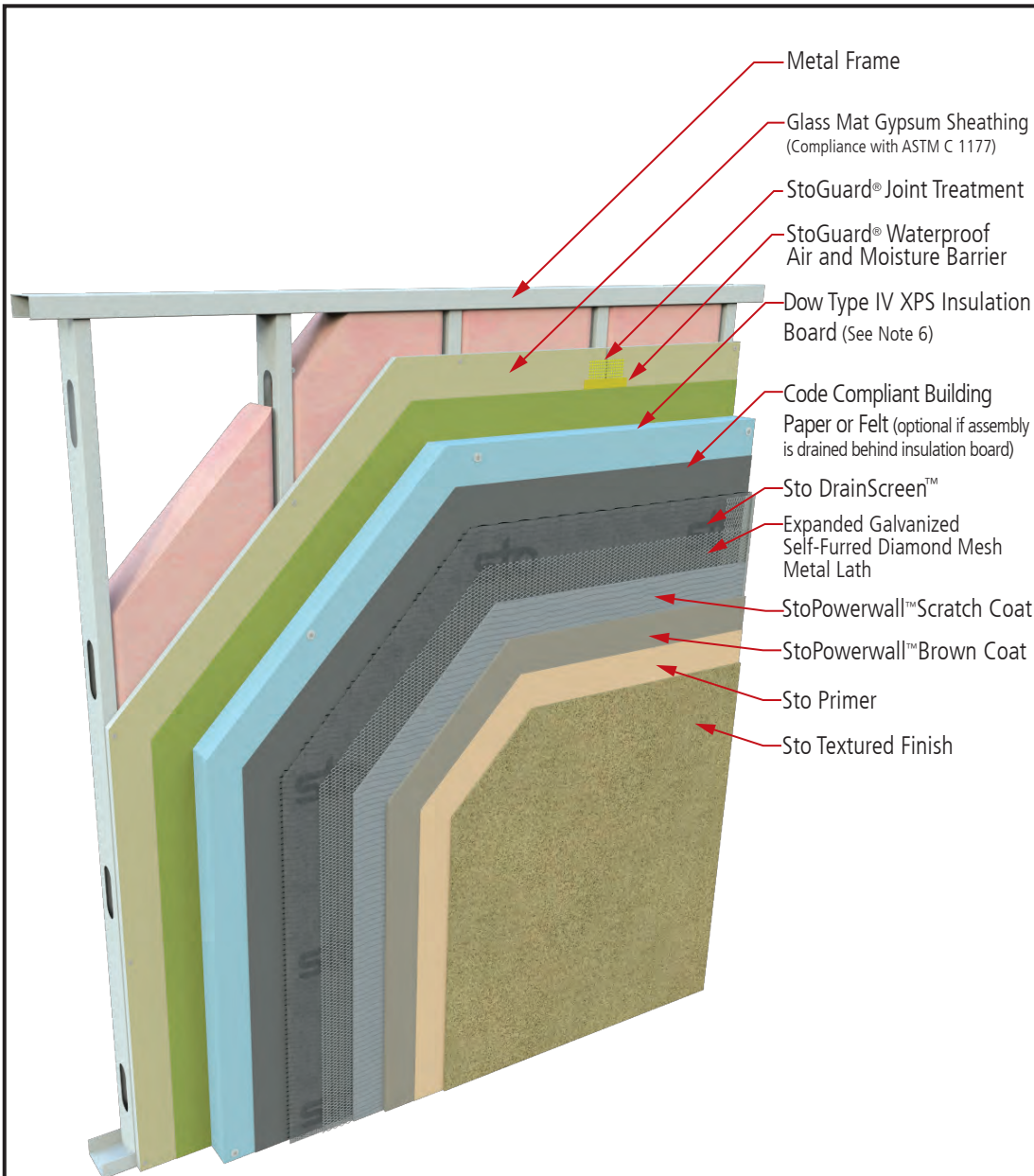


Property of Sto Corp.
All Rights Reserved.

Sto Powerwall®ci System Components

Detail No.: 63s.00

Date: March 2016



IMPORTANT: Components not identified as Sto are furnished by other manufacturers and are not necessarily installed by trades who install the Sto products. Refer to project specific contract documents.

Property of Sto Corp. All Rights Reserved.

Notes:

- StoGuard® joint treatment options:
 - StoGuard® RapidFill® (joints $\leq 1/4$ inch [6 mm])
 - Sto Gold Fill® with StoGuard® Mesh (joints $\leq 1/8$ inch [3 mm])
 - StoGuard® Fabric with StoGuard® air and moisture barrier (joints $\leq 1/8$ inch [3 mm])
- StoGuard® air and moisture barrier options:
 - Sto Gold Coat® (vapor permeable)
 - Sto EmeraldCoat® (high perm)
 - Sto VaporSeal™ (vapor impermeable)
 - Sto AirSeal™ (high perm) (Not for use with Sto Guard Fabric)
- Refer to product bulletins and Sto Specification S 507x for complete information on Sto products. Refer to StoGuard® Air and Moisture Barrier detail series 20.XX for information on detailing with StoGuard®.
- IMPORTANT.** Refer to Sto Detail 63s.FP for special requirements related to Noncombustible Type construction and Fire-Resistive Rated Construction.
- Prevent the accumulation of water into or behind the stucco, either by condensation or leakage into the wall construction, in the design and detailing of the wall assembly. Drainage is not a replacement for sound design and construction practice. Refer to Sto Tech Hotline Nos. 0403-BSc, Critical Detail Checklist for Wall Assemblies, and 0603-BSc, Moisture Control Principles for Design and Construction of Wall Assemblies, for more information.
- Provide drainage behind insulation board when appropriate, based on project design and exposure conditions. Use Sto Drainscreen™ installed behind insulation, OR use ribbons of Turbostick adhesive to install maximum 2'x8' (600x2400mm) insulation board, OR use Dow STYROFOAM™ Brand Perimate™ with channels oriented vertically, OR use other code approved method.

ATTENTION

Sto products are intended for use by qualified professional contractors, not consumers, as a component of a larger construction assembly as specified by a qualified design professional, general contractor or builder. They should be installed in accordance with those specifications and Sto's instructions. Sto Corp. disclaims all, and assumes no, liability for on-site inspections, for its products applied improperly, or by unqualified persons or entities, or as part of an improperly designed or constructed building, for the nonperformance of adjacent building components or assemblies, or for other construction activities beyond Sto's control. Improper use of Sto products or use as part of an improperly designed or constructed larger assembly or building may result in serious damage to Sto products, and to the structure of the building or its components.

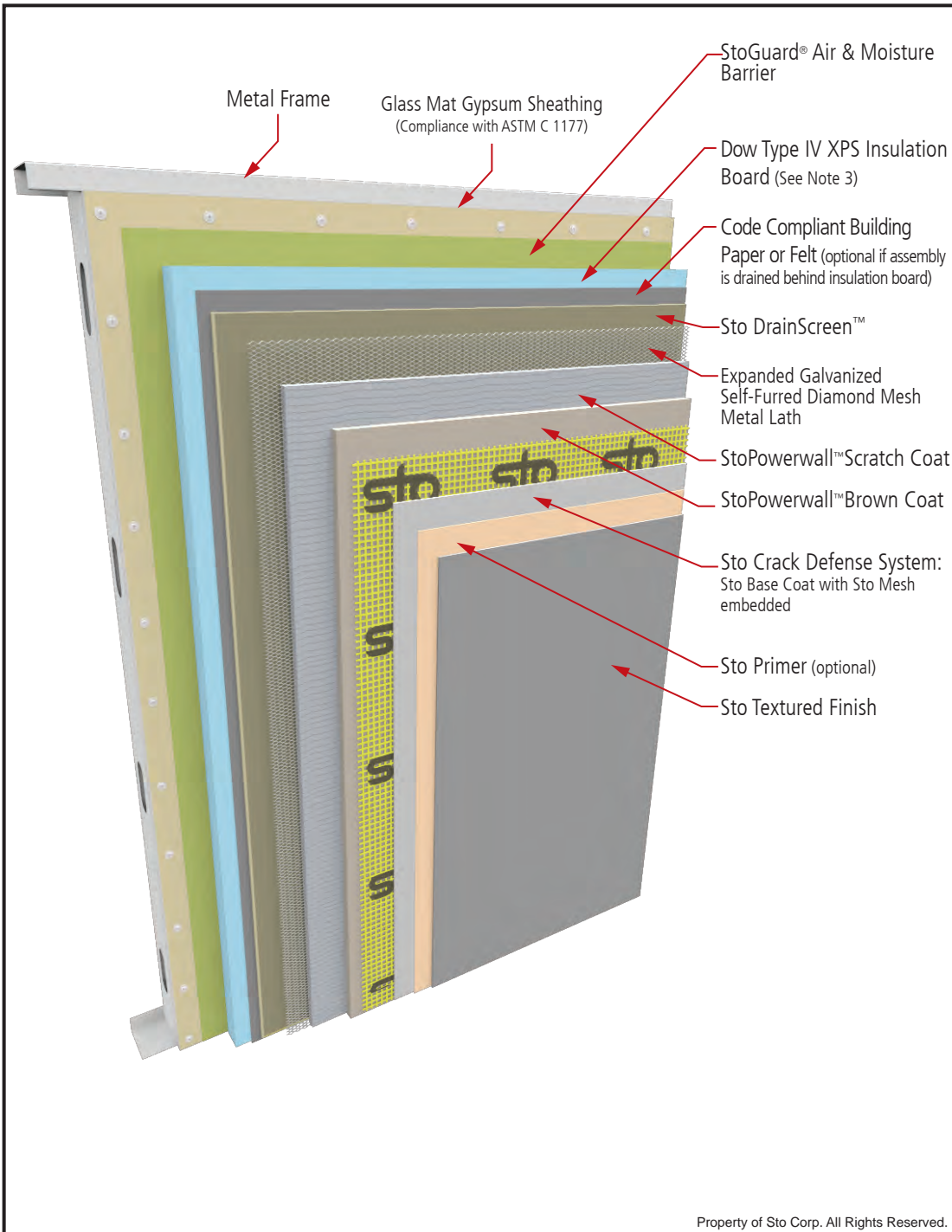
STO CORP. DISCLAIMS ALL WARRANTIES EXPRESSED OR IMPLIED EXCEPT FOR EXPLICIT LIMITED WRITTEN WARRANTIES ISSUED TO AND ACCEPTED BY BUILDING OWNERS IN ACCORDANCE WITH STO'S WARRANTY PROGRAMS WHICH ARE SUBJECT TO CHANGE FROM TIME TO TIME. For the fullest, most current information on proper application, clean-up, mixing and other specifications and warranties, cautions and disclaimers, please refer to the Sto Corp. website, www.stocorp.com.

www.stocorp.com


StoPowerwall® ci with Sto Crack Defense System System Components - Insulation Outbound

Detail No.: 63s.01

Date: March 2016



Notes:

1. StoGuard® Air & Moisture Barrier options:
 - a. Sto Gold Coat® (vapor permeable)
 - b. Sto EmeraldCoat® (high perm)
 - c. Sto VaporSeal™ (vapor impermeable)
 - d. Sto AirSeal™ (high perm)
 (Not for use with Sto Guard Fabric)
2. Refer to product bulletins and Sto Specification S 507x for complete information on Sto products. Refer to StoGuard® Air & Moisture Barrier detail series 20.XX for information on detailing with StoGuard®.
3. Provide drainage behind insulation board when appropriate, based on project design and exposure conditions. Use Sto DrainScreen™ installed behind insulation, OR use ribbons of Turbostick adhesive to install maximum 2'x8' (600x2400mm) insulation board, OR use Dow STYROFOAM™ Brand Perimate™ with channels oriented vertically, OR use other code approved method.

IMPORTANT. Refer to Sto Detail 63s.FP for special requirements related to Noncombustible Type construction and Fire-Resistive Rated Construction

IMPORTANT: Components not identified as Sto are furnished by other manufacturers and are not necessarily installed by trades who install the Sto products. Refer to project specific contract documents.

ATTENTION

Sto products are intended for use by qualified professional contractors, not consumers, as a component of a larger construction assembly as specified by a qualified design professional, general contractor or builder. They should be installed in accordance with those specifications and Sto's instructions. Sto Corp. disclaims all, and assumes no, liability for on-site inspections, for its products applied improperly, or by unqualified persons or entities, or as part of an improperly designed or constructed building, to the nonperformance of adjacent building components or assemblies, or for other construction activities beyond Sto's control. Improper use of Sto products or use as part of an improperly designed or constructed larger assembly or building may result in serious damage to Sto products, and to the structure of the building or its components

STO CORP. DISCLAIMS ALL WARRANTIES EXPRESSED OR IMPLIED EXCEPT FOR EXPLICIT LIMITED WRITTEN WARRANTIES ISSUED TO AND ACCEPTED BY BUILDING OWNERS IN ACCORDANCE WITH STO'S WARRANTY PROGRAMS WHICH ARE SUBJECT TO CHANGE FROM TIME TO TIME. For the fullest, most current information on proper application, clean-up, mixing and other specifications and warranties, cautions and disclaimers, please refer to the Sto Corp. website www.stocorp.com.

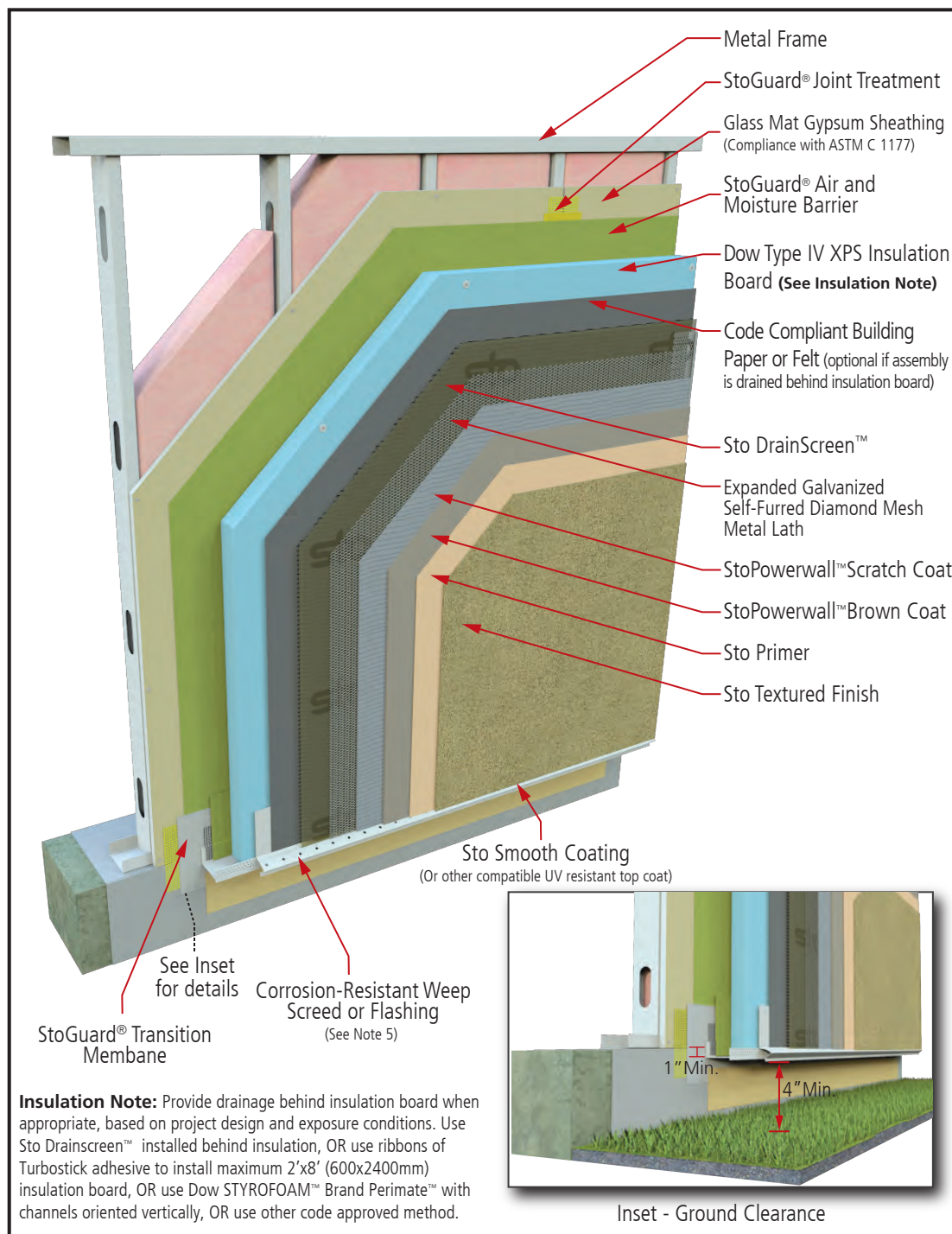
www.stocorp.com


Sto®Powerwall®ci

Termination at Grade: Sheathing Flush with Foundation

Detail No.: 63s.02

Date: March 2016



Notes:

- StoGuard® joint treatment options:
 - StoGuard® RapidFill (joints $\leq 1/4$ inch [6 mm])
 - Sto Gold Fill® with StoGuard® Mesh (joints $\leq 1/8$ inch [3 mm])
 - StoGuard® Fabric with StoGuard® air and moisture barrier (joints $\leq 1/8$ inch [3 mm])
- StoGuard® Transition Membrane Options:
 - StoGuard® RaidSeal® with StoGuard® Mesh
 - Sto Gold Fill with StoGuard® Mesh
- StoGuard® air and moisture barrier options:
 - Sto Gold Coat® (vapor permeable)
 - Sto EmeraldCoat® (high perm)
 - Sto VaporSeal™ (vapor impermeable)
 - Sto AirSeal™ (high perm) (Not for use with Sto Guard Fabric)
- Refer to product bulletins and Sto Specification S 507x for complete information on Sto products. Refer to StoGuard® Air and Moisture Barrier detail series 20.XX for information on detailing with StoGuard®.
- IMPORTANT. Refer to Sto Detail 63s.FP for special requirements related to Noncombustible Type construction and Fire-Resistive Rated Construction
- Cladding termination minimum 4" (101 mm) above finish grade, minimum 2" (51mm) above paved surfaces. In areas where the probability of termite infestation is very heavy, foam plastic insulation may require at least 6" (152 mm) clearance above grade (see IBC Section 2903.9).

IMPORTANT: Components not identified as Sto are furnished by other manufacturers and are not necessarily installed by trades who install the Sto products. Refer to project specific contract documents.

Property of Sto Corp. All Rights Reserved.

ATTENTION

Sto products are intended for use by qualified professional contractors, not consumers, as a component of a larger construction assembly as specified by a qualified design professional, general contractor or builder. They should be installed in accordance with those specifications and Sto's instructions. Sto Corp. disclaims all, and assumes no, liability for on-site inspections, for its products applied improperly, or by unqualified persons or entities, or as part of an improperly designed or constructed building, for the nonperformance of adjacent building components or assemblies, or for other construction activities beyond Sto's control. Improper use of Sto products or use as part of an improperly designed or constructed larger assembly or building may result in serious damage to Sto products, and to the structure of the building or its components.

STO CORP. DISCLAIMS ALL WARRANTIES EXPRESSED OR IMPLIED EXCEPT FOR EXPLICIT LIMITED WRITTEN WARRANTIES ISSUED TO AND ACCEPTED BY BUILDING OWNERS IN ACCORDANCE WITH STO'S WARRANTY PROGRAMS WHICH ARE SUBJECT TO CHANGE FROM TIME TO TIME. For the fullest, most current information on proper application, clean-up, mixing and other specifications and warranties, cautions and disclaimers, please refer to the Sto Corp. website, www.stocorp.com.

www.stocorp.com

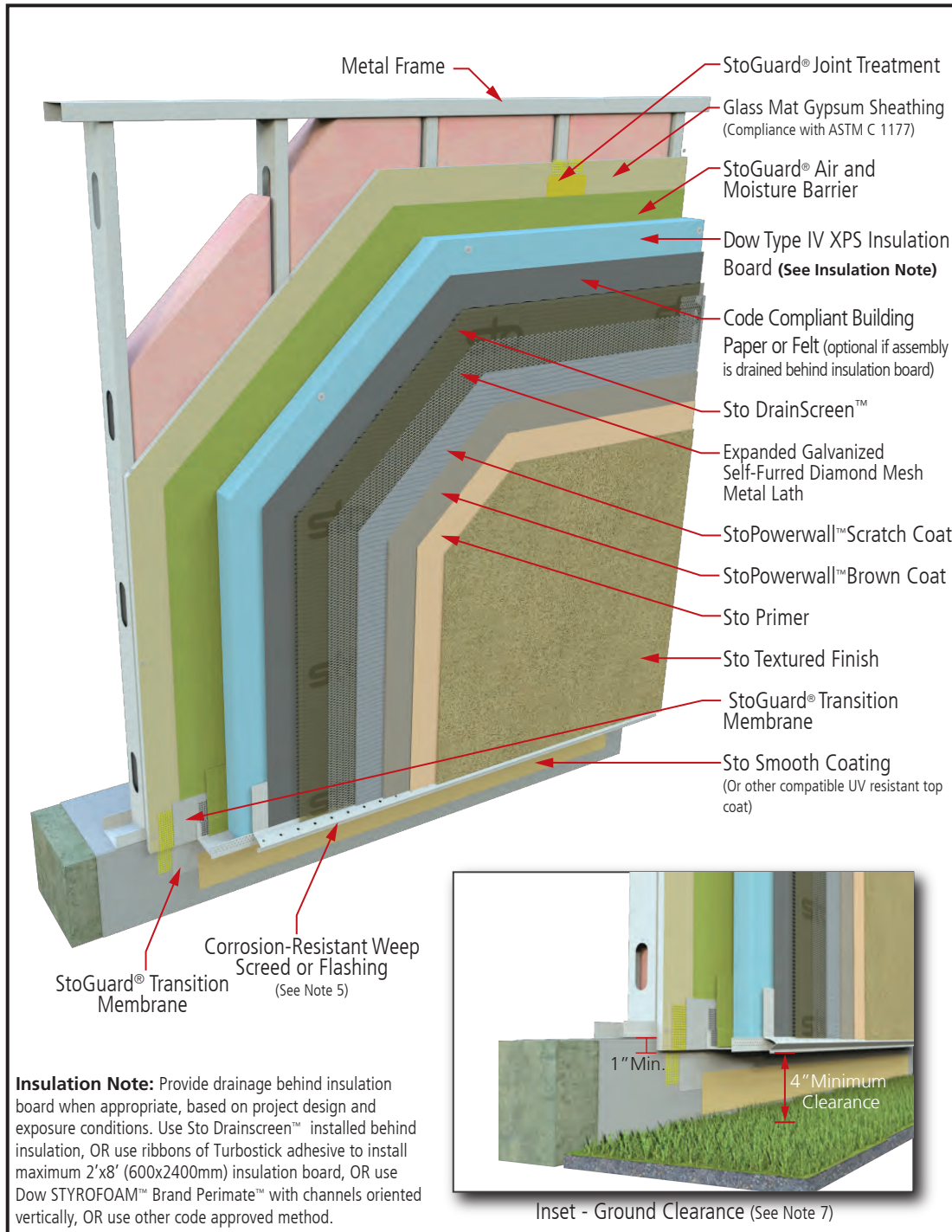


Sto®Powerwall®ci

Termination at Grade: Sheathing over Foundation

Detail No.: 63s.03

Date: March 2016



Notes:

- StoGuard® joint treatment options:
 - StoGuard® RapidFill (joints $\leq 1/4$ inch [6 mm])
 - Sto Gold Fill® with StoGuard® Mesh (joints $\leq 1/8$ inch [3 mm])
 - StoGuard® Fabric with StoGuard® air and moisture barrier (joints $\leq 1/8$ inch [3 mm])
- StoGuard® Transition Membrane Options:
 - StoGuard® RaidSeal® with StoGuard® Mesh
 - Sto Gold Fill with StoGuard® Mesh
 - StoGuard® Fabric with StoGuard® waterproof air barrier membrane (for transition at weep screed only)
- StoGuard® air and moisture barrier options:
 - Sto Gold Coat® (vapor permeable)
 - Sto EmeraldCoat® (high perm)
 - Sto VaporSeal™ (vapor impermeable)
 - Sto AirSeal™ (high perm) (Not for use with Sto Guard Fabric)
- Refer to product bulletins and Sto Specification S 507x for complete information on Sto products. Refer to StoGuard® Air and Moisture Barrier detail series 20.XX for information on detailing with StoGuard®.
- IMPORTANT.** Refer to Sto Detail 63s.FP for special requirements related to Noncombustible Type construction and Fire-Resistive Rated Construction
- Cladding termination minimum 4" (101 mm) above finish grade, minimum 2" (51mm) above paved surfaces. In areas where the probability of termite infestation is very heavy, foam plastic insulation may require at least 6" (152 mm) clearance above grade (see IBC Section 2903.9).

IMPORTANT: Components not identified as Sto are furnished by other manufacturers and are not necessarily installed by trades who install the Sto products. Refer to project specific contract documents.

Property of Sto Corp. All Rights Reserved.

www.stocorp.com

ATTENTION

Sto products are intended for use by qualified professional contractors, not consumers, as a component of a larger construction assembly as specified by a qualified design professional, general contractor or builder. They should be installed in accordance with those specifications and Sto's instructions. Sto Corp. disclaims all, and assumes no, liability for on-site inspections, for its products applied improperly, or by unqualified persons or entities, or as part of an improperly designed or constructed building, for the nonperformance of adjacent building components or assemblies, or for other construction activities beyond Sto's control. Improper use of Sto products or use as part of an improperly designed or constructed larger assembly or building may result in serious damage to Sto products, and to the structure of the building or its components.

STO CORP. DISCLAIMS ALL WARRANTIES EXPRESSED OR IMPLIED EXCEPT FOR EXPLICIT LIMITED WRITTEN WARRANTIES ISSUED TO AND ACCEPTED BY BUILDING OWNERS IN ACCORDANCE WITH STO'S WARRANTY PROGRAMS WHICH ARE SUBJECT TO CHANGE FROM TIME TO TIME. For the fullest, most current information on proper application, clean-up, mixing and other specifications and warranties, cautions and disclaimers, please refer to the Sto Corp. website, www.stocorp.com.



Sto®Powerwall®ci

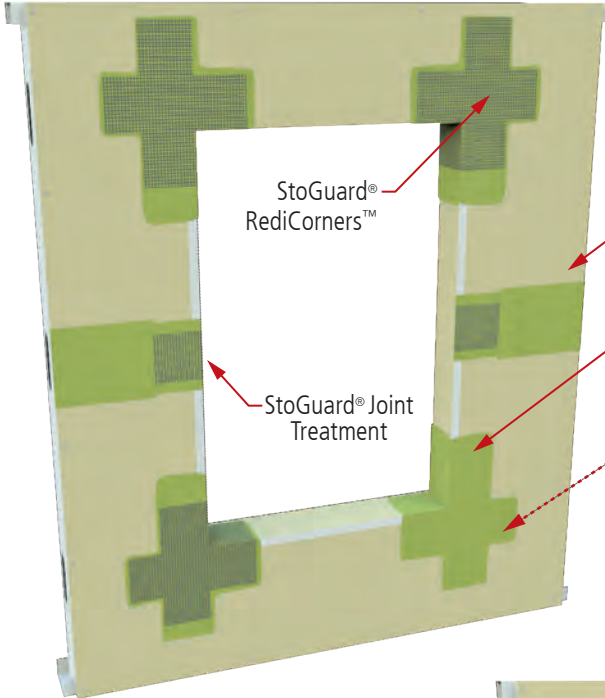
Rough Opening Protection with StoGuard®Fabric

Detail No.: 63s.04F

Date: March 2016

Page 1 of 2

Step 1



Apply StoGuard® air and moisture barrier liberally at corners of rough openings and place StoGuard® RediCorners™ in wet membrane. Use brush, roller, trowel or taping knife to fully embed StoGuard® RediCorner™

Glass Mat Gypsum Sheathing
(Compliance with ASTM C 1177)

StoGuard® Air and Moisture Barrier

StoGuard® RediCorners™

StoGuard® Joint Treatment

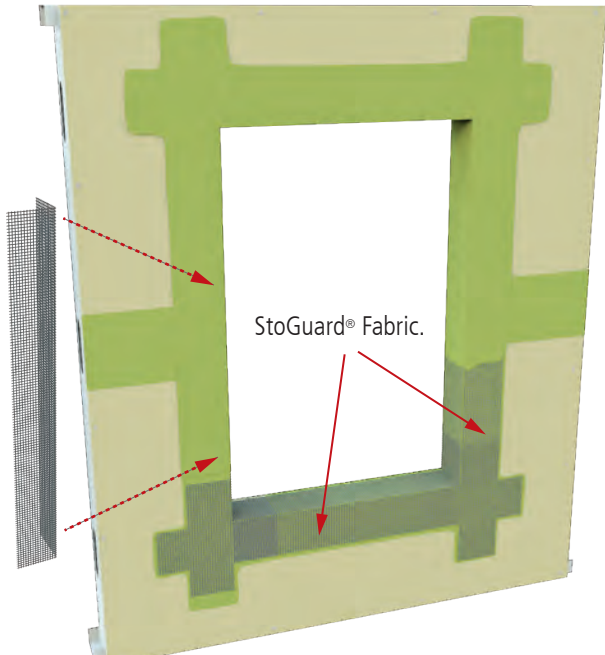
Notes:

1. StoGuard® joint treatment options:
 - a. StoGuard® RapidFill
(joints ≤ 1/4 inch [6 mm])
 - b. Sto Gold Fill® with StoGuard® Mesh (joints ≤ 1/8 inch [3 mm])
 - c. StoGuard® Fabric with StoGuard® air and moisture barrier
(joints ≤ 1/8 inch [3 mm])
2. Rough Opening Protection Options:
 - a. Sto Gold Fill with StoGuard® Mesh (refer to Sto Detail 20.20M)
 - b. Sto Waterproof Air Barrier with StoGuard® Fabric (refer to Sto Detail 20.20F)
 - c. Sto Waterproof Air Barrier with StoGuard® Fabric and StoGuard® Tape (refer to Sto Detail 20.20FT)
 - d. StoGuard® Tape (refer to Sto Detail 20.20T)
 - e. StoGuard® RapidSeal® (refer to Sto Detail 20.20R)
3. StoGuard® air and moisture barrier options:
 - a. Sto Gold Coat® (vapor permeable)
 - b. Sto EmeraldCoat® (high perm)
 - c. Sto VaporSeal™ (vapor impermeable)
 - d. Sto AirSeal™ (high perm)
(Not for use with Sto Guard Fabric)
4. Refer to product bulletins and Sto Specification S 507x for complete information on Sto products. Refer to StoGuard® Air and Moisture Barrier detail series 20.XX for information on detailing with StoGuard®.
5. IMPORTANT. Refer to Sto Detail 63s.FP for special requirements related to Noncombustible Type construction and Fire-Resistive Rated Construction

Step 2

Immediately apply StoGuard® air and moisture barrier liberally to inside of opening and around outside of head, sill and jambs.

Center 6" (150 mm) wide StoGuard®Fabric on outside corners and press into wet membrane along the head, jambs, and sill with minimum 2" (50 mm) overlaps of adjacent fabric. Use brush, roller, trowel or taping knife to fully embed.



StoGuard® Fabric.

Property of Sto Corp. All Rights Reserved.

ATTENTION

Sto products are intended for use by qualified professional contractors, not consumers, as a component of a larger construction assembly as specified by a qualified design professional, general contractor or builder. They should be installed in accordance with those specifications and Sto's instructions. Sto Corp. disclaims all, and assume no, liability for on-site inspections, for its products applied improperly, or by unqualified persons or entities, or as part of an improperly designed or constructed building for the nonperformance of adjacent building components or assemblies, or for other construction activities beyond Sto's control. Improper use of Sto products or use as part of an improperly designed or constructed larger assembly or building may result in serious damage to Sto products, and to the structure of the building or its components.

STO CORP. DISCLAIMS ALL WARRANTIES EXPRESSED OR IMPLIED EXCEPT FOR EXPLICIT LIMITED WRITTEN WARRANTIES ISSUED TO AND ACCEPTED BY BUILDING OWNERS IN ACCORDANCE WITH STO'S WARRANTY PROGRAMS WHICH ARE SUBJECT TO CHANGE FROM TIME TO TIME. For the fullest, most current information on proper application, clean-up, mixing and other specifications and warranties, cautions and disclaimers, please refer to the Sto Corp. website www.stocorp.com.

www.stocorp.com


Sto®Powerwall®ci

Rough Opening Protection with StoGuard®Fabric

Detail No.: 63s.04F

Date: March 2016

Page 2 of 2

Step 3

Immediately coat the entire surface of the wall and into rough opening with StoGuard® waterproof air barrier membrane to produce a void and pinhole free surface.

Edges of StoGuard®RediCorners™ and StoGuard®Fabric must lay flat, wrinkle-free, and be fully embedded in the membrane and fully adhered to the substrate or previous layer of StoGuard® Fabric.

StoGuard® Waterproof Air Barrier Membrane

StoGuard® Transition Membrane
See note #3

Head Flashing

Dow Type IV XPS Insulation Board (See Insulation Note)

StoGuard® Transition Membrane

Pan Flashing

Insulation Note: Provide drainage behind insulation board when appropriate, based on project design and exposure conditions. Use Sto Drainscreen™ installed behind insulation, OR use ribbons of Turbostick adhesive to install maximum 2'x8' (600x2400mm) insulation board, OR use Dow STYROFOAM™ Brand Perimate™ with channels oriented vertically, OR use other code approved method.

Property of Sto Corp. All Rights Reserved.

Notes:

1. StoGuard® joint treatment options:

- StoGuard® RapidFill
(joints ≤ 1/4 inch [6 mm])
- Sto Gold Fill® with StoGuard® Mesh (joints ≤ 1/8 inch [3 mm])
- StoGuard® Fabric with StoGuard® air and moisture barrier
(joints ≤ 1/8 inch [3 mm])

2. Rough Opening Protection Options:

- Sto Gold Fill with StoGuard®Mesh (refer to Sto Detail 20.20M)
- Sto Waterproof Air Barrier with StoGuard® Fabric (refer to Sto Detail 20.20F)
- Sto Waterproof Air Barrier with StoGuard® Fabric and StoGuard® Tape (refer to Sto Detail 20.20FT)
- StoGuard® Tape (refer to Sto Detail 20.20T)
- StoGuard® RapidSeal® (refer to Sto Detail 20.20R)

3. StoGuard® air and moisture barrier options:

- Sto Gold Coat® (vapor permeable)
- Sto EmeraldCoat® (high perm)
- Sto VaporSeal™ (vapor impermeable)
- Sto AirSeal™ (high perm)
(Not for use with Sto Guard Fabric)

4. Refer to product bulletins and Sto Specification S 507x for complete information on Sto products. Refer to StoGuard® Air and Moisture Barrier detail series 20.XX for information on detailing with StoGuard®.

5. IMPORTANT. Refer to Sto Detail 63s.FP for special requirements related to Noncombustible Type construction and Fire-Resistive Rated Construction

IMPORTANT: Components not identified as Sto are furnished by other manufacturers and are not necessarily installed by trades who install the Sto products. Refer to project specific contract documents.

ATTENTION

Sto products are intended for use by qualified professional contractors, not consumers, as a component of a larger construction assembly as specified by a qualified design professional, general contractor or builder. They should be installed in accordance with those specifications and Sto's instructions. Sto Corp. disclaims all, and assumes no, liability for on-site inspections, for its products applied improperly, or by unqualified persons or entities, or as part of an improperly designed or constructed building, for the nonperformance of adjacent building components or assemblies, or for other construction activities beyond Sto's control. Improper use of Sto products or use as part of an improperly designed or constructed larger assembly or building may result in serious damage to Sto products, and to the structure of the building or its components.

STO CORP. DISCLAIMS ALL WARRANTIES EXPRESSED OR IMPLIED EXCEPT FOR EXPLICIT LIMITED WRITTEN WARRANTIES ISSUED TO AND ACCEPTED BY BUILDING OWNERS IN ACCORDANCE WITH STO'S WARRANTY PROGRAMS WHICH ARE SUBJECT TO CHANGE FROM TIME TO TIME. For the fullest, most current information on proper application, clean-up, mixing and other specifications and warranties, cautions and disclaimers, please refer to the Sto Corp. website, www.stocorp.com.

www.stocorp.com



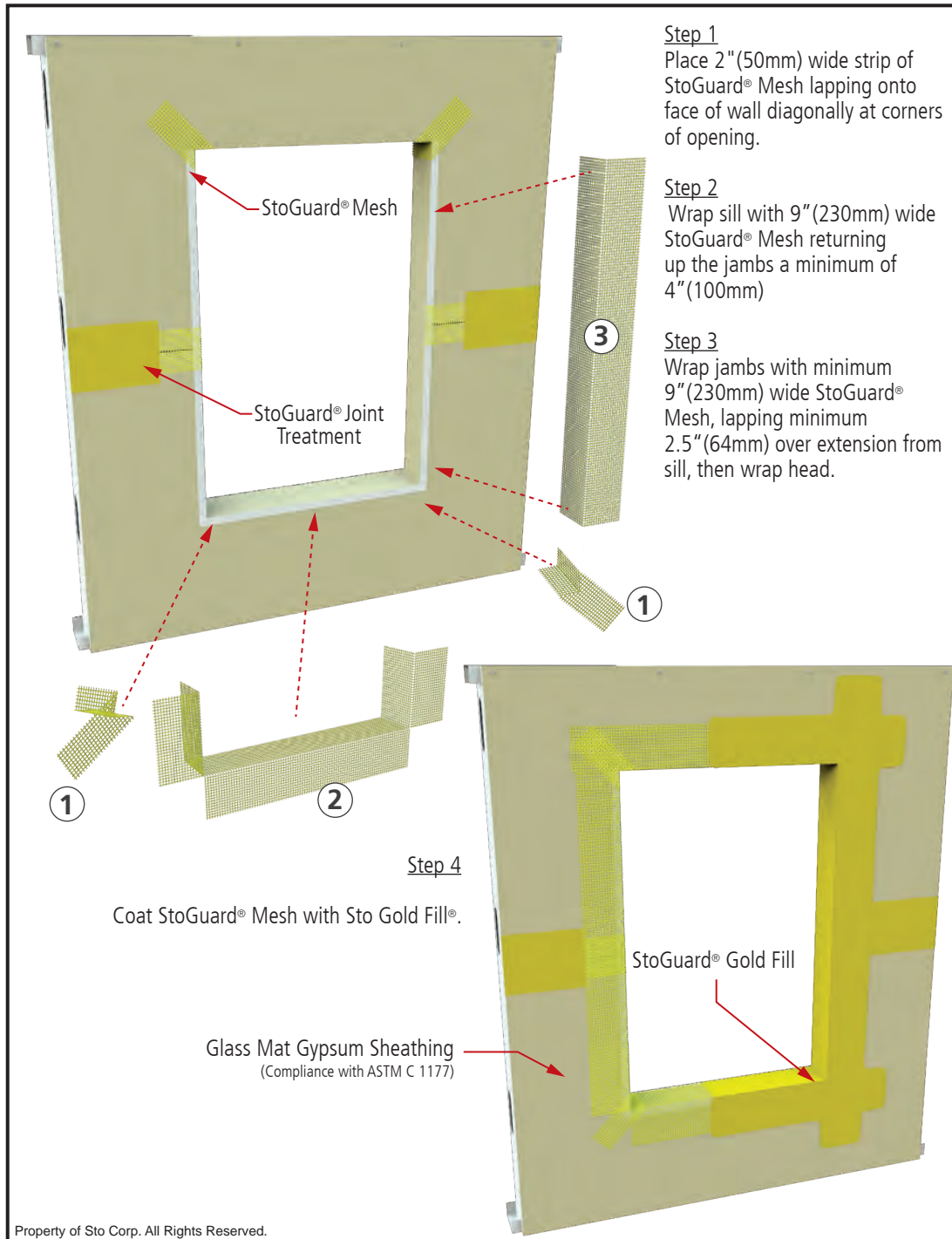
Sto®Powerwall®ci

Rough Opening Protection with StoGuard® Mesh

Detail No.: 63s.04M

Date: March 2016

Page 1 of 2



Notes:

- StoGuard® joint treatment options:
 - StoGuard® RapidSeal® with StoGuard® Mesh
(joints ≤ 1/4 inch [6 mm])
 - Sto Gold Fill® with StoGuard® Mesh (joints ≤ 1/8 inch [3 mm])
 - StoGuard® Fabric with StoGuard® waterproof air barrier membrane (joints ≤ 1/8 inch [3 mm])
- Rough Opening Protection Options:
 - Sto Gold Fill with StoGuard® Mesh (refer to Sto Detail 20.20M)
 - Sto Waterproof Air Barrier with StoGuard® Fabric (refer to Sto Detail 20.20F)
 - Sto Waterproof Air Barrier with StoGuard® Fabric and StoGuard® Tape (refer to Sto Detail 20.20FT)
 - StoGuard® Tape (refer to Sto Detail 20.20T)
 - StoGuard® RapidSeal® (refer to Sto Detail 20.20R)
- StoGuard® waterproof air barrier membrane options:
 - Sto Gold Coat® (vapor permeable)
 - Sto EmeraldCoat® (high perm)
 - Sto VaporSeal™ (vapor impermeable)
 - Sto AirSeal™ (high perm)
(Not for use with Sto Guard Fabric)
- Refer to product bulletins and Sto Specification S 507 for complete information on Sto products. Refer to StoGuard® Waterproof Air Barrier detail series 20.XX for information on detailing with StoGuard®.
- IMPORTANT. Refer to Sto Detail 63s.FP for special requirements related to Noncombustible Type construction and Fire-Resistive Rated Construction

IMPORTANT: Components not identified as Sto are furnished by other manufacturers and are not necessarily installed by trades who install the Sto products. Refer to project specific contract documents.

www.stocorp.com

ATTENTION

Sto products are intended for use by qualified professional contractors, not consumers, as a component of a larger construction assembly as specified by a qualified design professional, general contractor or builder. They should be installed in accordance with those specifications and Sto's instructions. Sto Corp. disclaims all, and assumes no, liability for on-site inspections, for its products applied improperly, or by unqualified persons or entities, or as part of an improperly designed or constructed building, for the nonperformance of adjacent building components or assemblies, or for other construction activities beyond Sto's control. Improper use of Sto products or use as part of an improperly designed or constructed larger assembly or building may result in serious damage to Sto products, and to the structure of the building or its components.

STO CORP. DISCLAIMS ALL WARRANTIES EXPRESSED OR IMPLIED EXCEPT FOR EXPLICIT LIMITED WRITTEN WARRANTIES ISSUED TO AND ACCEPTED BY BUILDING OWNERS IN ACCORDANCE WITH STO'S WARRANTY PROGRAMS WHICH ARE SUBJECT TO CHANGE FROM TIME TO TIME. For the fullest, most current information on proper application, clean-up, mixing and other specifications and warranties, cautions and disclaimers, please refer to the Sto Corp. website, www.stocorp.com.



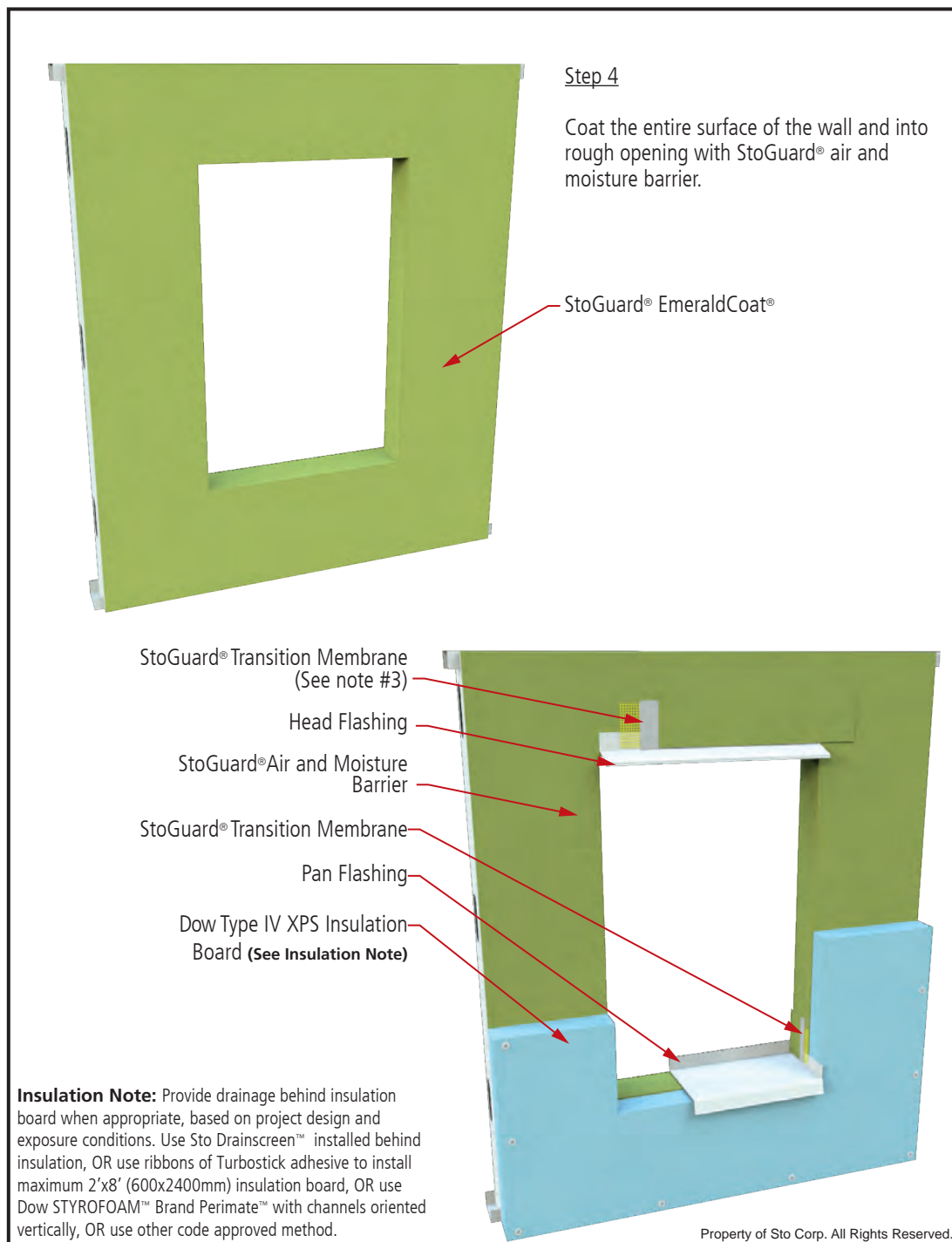
Sto®Powerwall®ci

Rough Opening Protection with StoGuard®Mesh

Detail No.: 63s.04M

Date: March 2016

Page 2 of 2



Notes:

1. StoGuard® joint treatment options:

- StoGuard® RapidSeal® with StoGuard® Mesh (joints ≤ 1/4 inch [6 mm])
- Sto Gold Fill® with StoGuard® Mesh (joints ≤ 1/8 inch [3 mm])
- StoGuard® Fabric with StoGuard® waterproof air barrier membrane (joints ≤ 1/8 inch [3 mm])

2. Rough Opening Protection Options:

- Sto Gold Fill with StoGuard® Mesh (refer to Sto Detail 20.20M)
- Sto Waterproof Air Barrier with StoGuard® Fabric (refer to Sto Detail 20.20F)
- Sto Waterproof Air Barrier with StoGuard® Fabric and StoGuard® Tape (refer to Sto Detail 20.20FT)
- StoGuard® Tape (refer to Sto Detail 20.20T)
- StoGuard® RapidSeal® (refer to Sto Detail 20.20R)

3. StoGuard® waterproof air barrier membrane options:

- Sto Gold Coat® (vapor permeable)
 - Sto EmeraldCoat® (high perm)
 - Sto VaporSeal™ (vapor impermeable)
 - Sto AirSeal™ (high perm)
- (Not for use with Sto Guard Fabric)

4. Refer to product bulletins and Sto Specification S 507 for complete information on Sto products. Refer to StoGuard® Waterproof Air Barrier detail series 20.XX for information on detailing with StoGuard®.

5. IMPORTANT. Refer to Sto Detail 63s.FP for special requirements related to Noncombustible Type construction and Fire-Resistive Rated Construction

IMPORTANT: Components not identified as Sto are furnished by other manufacturers and are not necessarily installed by trades who install the Sto products. Refer to project specific contract documents.

www.stocorp.com

ATTENTION

Sto products are intended for use by qualified professional contractors, not consumers, as a component of a larger construction assembly as specified by a qualified design professional, general contractor or builder. They should be installed in accordance with those specifications and Sto's instructions. Sto Corp. disclaims all, and assumes no, liability for on-site inspections, for its products applied improperly, or by unqualified persons or entities, or as part of an improperly designed or constructed building, for the nonperformance of adjacent building components or assemblies, or for other construction activities beyond Sto's control. Improper use of Sto products or use as part of an improperly designed or constructed larger assembly or building may result in serious damage to Sto products, and to the structure of the building or its components.

STO CORP. DISCLAIMS ALL WARRANTIES EXPRESSED OR IMPLIED EXCEPT FOR EXPLICIT LIMITED WRITTEN WARRANTIES ISSUED TO AND ACCEPTED BY BUILDING OWNERS IN ACCORDANCE WITH STO'S WARRANTY PROGRAMS WHICH ARE SUBJECT TO CHANGE FROM TIME TO TIME. For the fullest, most current information on proper application, clean-up, mixing and other specifications and warranties, cautions and disclaimers, please refer to the Sto Corp. website, www.stocorp.com.



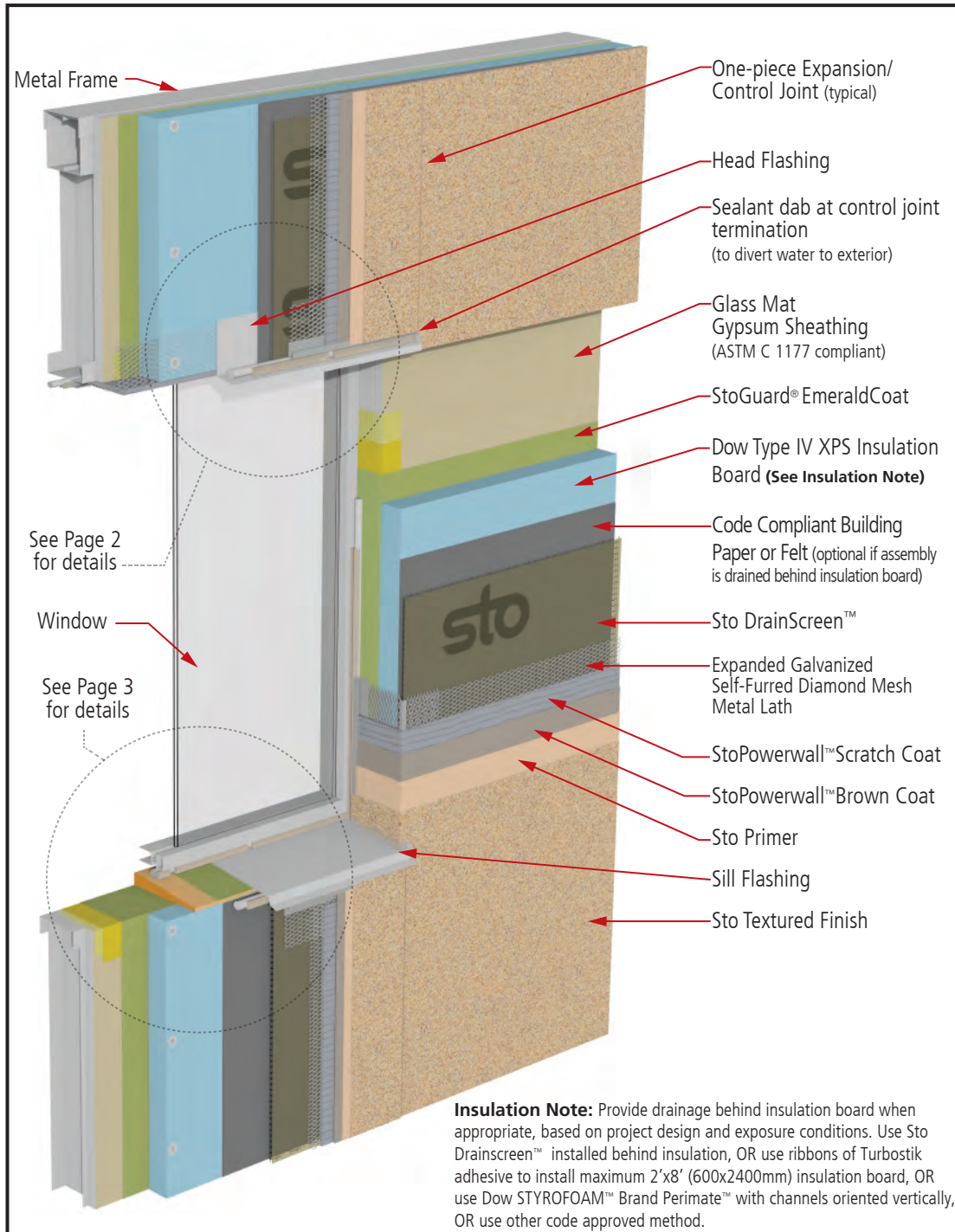
Sto®Powerwall®ci

Box Window at Sill, Jamb, and Head

Detail No.: 63s.05

Date: March 2016

Page 1 of 3



Notes:

- StoGuard® joint treatment options:
 - StoGuard® RapidFill (joints ≤ 1/4 inch [6 mm])
 - Sto Gold Fill® with StoGuard® Mesh (joints ≤ 1/8 inch [3 mm])
 - StoGuard® Fabric with StoGuard® waterproof air barrier membrane (joints ≤ 1/8 inch [3 mm])
- StoGuard® air and moisture barrier options:
 - Sto Gold Coat® (vapor permeable)
 - Sto EmeraldCoat® (high perm)
 - Sto VaporSeal™ (vapor impermeable)
 - Sto AirSeal™ (high perm) (Not for use with Sto Guard Fabric)
- Refer to product bulletins and Sto Specification S 507x for complete information on Sto products. Refer to StoGuard® Air and Moisture Barrier detail series 20.XX for information on detailing with StoGuard®.
- IMPORTANT:** Refer to Sto Detail 62s.FP for special requirements related to Noncombustible Type construction and Fire-Resistive Rated Construction
- Consult with window and sealant manufacturers to verify window installation and detailing to assure no leakage into the wall assembly. Consult with window manufacturer regarding window and flashing assemblies with thermal breaks to avoid condensation. Test the final assembly using materials and sub-trades associated with the project to verify performance.

IMPORTANT: Components not identified as Sto are furnished by other manufacturers and are not necessarily installed by trades who install the Sto products. Refer to project specific contract documents.

Property of Sto Corp. All Rights Reserved.

www.stocorp.com

ATTENTION

Sto products are intended for use by qualified professional contractors, not consumers, as a component of a larger construction assembly as specified by a qualified design professional, general contractor or builder. They should be installed in accordance with those specifications and Sto's instructions. Sto Corp. disclaims all, and assumes no, liability for on-site inspections, for its products applied improperly, or by unqualified persons or entities, or as part of an improperly designed or constructed building, for the nonperformance of adjacent building components or assemblies, or for other construction activities beyond Sto's control. Improper use of Sto products or use as part of an improperly designed or constructed larger assembly or building may result in serious damage to Sto products, and to the structure of the building or its components.

STO CORP. DISCLAIMS ALL WARRANTIES EXPRESSED OR IMPLIED EXCEPT FOR EXPLICIT LIMITED WRITTEN WARRANTIES ISSUED TO AND ACCEPTED BY BUILDING OWNERS IN ACCORDANCE WITH STO'S WARRANTY PROGRAMS WHICH ARE SUBJECT TO CHANGE FROM TIME TO TIME. For the fullest, most current information on proper application, clean-up, mixing and other specifications and warranties, cautions and disclaimers, please refer to the Sto Corp. website, www.stocorp.com.



Sto®Powerwall®ci Box Window at Head/Jamb

Detail No.: 63s.05

Date: March 2016

Page 2 of 3

Code Compliant Building Paper or Felt (optional if assembly is drained behind insulation board)

One piece Expansion/
Control Joint (typical)

Flashing End Dam

Metal Lath or Corner Accessory
(folded onto Styrofoam surface)

Head Flashing

Inset 1 - Head & Jamb & End Dam Detail
without Sto Textured FinishFlashing
End Dam

Sto DrainScreen™

Backer Rod
& Sealant
(with weep holes)Sealant dab at control joint
termination
(to divert water to exterior)

StoGuard® Joint Treatment

StoGuard® EmeraldCoat

Dow Type IV XPS Insulation
Board (See Insulation Note)

Backer Rod & Sealant

Insulation Note: Provide drainage behind insulation board when appropriate, based on project design and exposure conditions. Use Sto DrainScreen™ installed behind insulation, OR use ribbons of Turbostick adhesive to install maximum 2'x8' (600x2400mm) insulation board, OR use Dow STYROFOAM™ Brand Perimate™ with channels oriented vertically, OR use other code approved method.

Metal Lath
or Corner Accessory
(tied to Casing Bead)Sto Powerwall™
Scratch and Brown CoatCasing Bead
(inbound of sheathing plane)Backer Rod
& SealantInset 2 - Head & Jamb Detail
with Sto Textured Finish

Notes:

1. StoGuard® joint treatment options:
a. StoGuard® RapidFill
(joints ≤ 1/4 inch [6 mm])
b. Sto Gold Fill® with StoGuard® Mesh (joints ≤ 1/8 inch [3 mm])
c. StoGuard® Fabric with StoGuard® waterproof air barrier membrane (joints ≤ 1/8 inch [3 mm])

2. StoGuard® air and moisture barrier options:

- a. Sto Gold Coat® (vapor permeable)
 - b. Sto EmeraldCoat® (high perm)
 - c. Sto VaporSeal™ (vapor impermeable)
 - d. Sto AirSeal™ (high perm)
- (Not for use with Sto Guard Fabric)

3. Refer to product bulletins and Sto Specification S 507x for complete information on Sto products. Refer to StoGuard® Air and Moisture Barrier detail series 20.XX for information on detailing with StoGuard®.

4. IMPORTANT. Refer to Sto Detail 62s.FP for special requirements related to Noncombustible Type construction and Fire-Resistive Rated Construction

5. Consult with window and sealant manufacturers to verify window installation and detailing to assure no leakage into the wall assembly. Consult with window manufacturer regarding window and flashing assemblies with thermal breaks to avoid condensation. Test the final assembly using materials and sub-trades associated with the project to verify performance.

IMPORTANT: Components not identified as Sto are furnished by other manufacturers and are not necessarily installed by trades who install the Sto products. Refer to project specific contract documents.

Property of Sto Corp. All Rights Reserved.

ATTENTION

Sto products are intended for use by qualified professional contractors, not consumers, as a component of a larger construction assembly as specified by a qualified design professional, general contractor or builder. They should be installed in accordance with those specifications and Sto's instructions. Sto Corp. disclaims all, and assumes no, liability for on-site inspections, for its products applied improperly, or by unqualified persons or entities, or as part of an improperly designed or constructed building, for the nonperformance of adjacent building components or assemblies, or for other construction activities beyond Sto's control. Improper use of Sto products or use as part of an improperly designed or constructed larger assembly or building may result in serious damage to Sto products, and to the structure of the building or its components.

STO CORP. DISCLAIMS ALL WARRANTIES EXPRESSED OR IMPLIED EXCEPT FOR EXPLICIT LIMITED WRITTEN WARRANTIES ISSUED TO AND ACCEPTED BY BUILDING OWNERS IN ACCORDANCE WITH STO'S WARRANTY PROGRAMS WHICH ARE SUBJECT TO CHANGE FROM TIME TO TIME. For the fullest, most current information on proper application, clean-up, mixing and other specifications and warranties, cautions and disclaimers, please refer to the Sto Corp. website, www.stocorp.com.

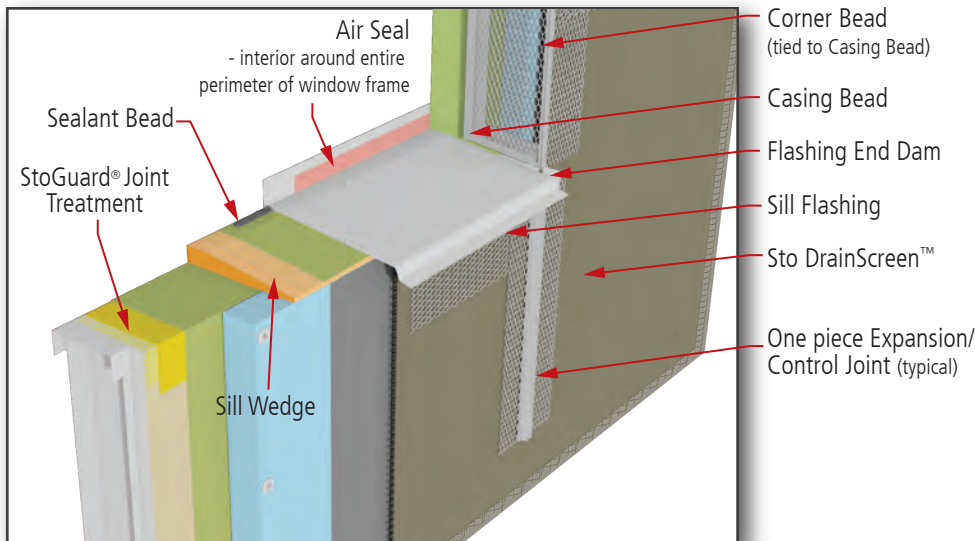
www.stocorp.com


Sto®Powerwall®ci Box Window at Sill/Jamb

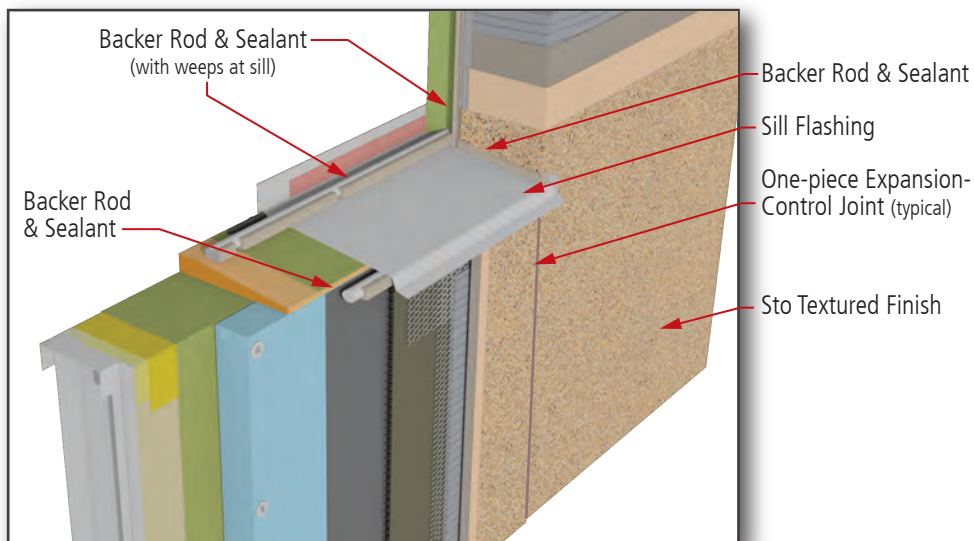
Detail No.: 63s.05

Date: March 2016

Page 3 of 3



Inset 3 - Sill & Jamb Detail
without Sto Textured Finish



Inset 4 - Sill & Jamb Detail
with Sto Textured Finish

Notes:

1. StoGuard® joint treatment options:
 - a. StoGuard® RapidFill (joints \leq 1/4 inch [6 mm])
 - b. Sto Gold Fill® with StoGuard® Mesh (joints \leq 1/8 inch [3 mm])
 - c. StoGuard® Fabric with StoGuard® waterproof air barrier membrane (joints \leq 1/8 inch [3 mm])
2. StoGuard® air and moisture barrier options:
 - a. Sto Gold Coat® (vapor permeable)
 - b. Sto EmeraldCoat® (high perm)
 - c. Sto VaporSeal™ (vapor impermeable)
 - d. Sto AirSeal™ (high perm)
 (Not for use with Sto Guard Fabric)

3. Refer to product bulletins and Sto Specification S 507x for complete information on Sto products. Refer to StoGuard® Air and Moisture Barrier detail series 20.XX for information on detailing with StoGuard®.

4. IMPORTANT. Refer to Sto Detail 62s.FP for special requirements related to Noncombustible Type construction and Fire-Resistive Rated Construction

5. Consult with window and sealant manufacturers to verify window installation and detailing to assure no leakage into the wall assembly. Consult with window manufacturer regarding window and flashing assemblies with thermal breaks to avoid condensation. Test the final assembly using materials and sub-trades associated with the project to verify performance.

Insulation Note: Provide drainage behind insulation board when appropriate, based on project design and exposure conditions. Use Sto Drainscreen™ installed behind insulation, OR use ribbons of Turbostick adhesive to install maximum 2'x8' (600x2400mm) insulation board, OR use Dow STYROFOAM™ Brand Perimate™ with channels oriented vertically, OR use other code approved method.

Property of Sto Corp. All Rights Reserved.

ATTENTION IMPORTANT: Components not identified as Sto are furnished by other manufacturers and are not necessarily installed by trades who install the Sto products. Refer to project specific contract documents.

Sto products are intended for use by qualified professional contractors, not consumers, as a component of a larger construction assembly as specified by a qualified design professional, general contractor or builder. They should be installed in accordance with those specifications and Sto's instructions. Sto Corp. disclaims all, and assumes no, liability for on-site inspections, for its products applied improperly, or by unqualified persons or entities, or as part of an improperly designed or constructed building, for the nonperformance of adjacent building components or assemblies, or for other construction activities beyond Sto's control. Improper use of Sto products or use as part of an improperly designed or constructed larger assembly or building may result in serious damage to Sto products, and to the structure of the building or its components.

STO CORP. DISCLAIMS ALL WARRANTIES EXPRESSED OR IMPLIED EXCEPT FOR EXPLICIT LIMITED WRITTEN WARRANTIES ISSUED TO AND ACCEPTED BY BUILDING OWNERS IN ACCORDANCE WITH STO'S WARRANTY PROGRAMS WHICH ARE SUBJECT TO CHANGE FROM TIME TO TIME. For the fullest, most current information on proper application, clean-up, mixing and other specifications and warranties, cautions and disclaimers, please refer to the Sto Corp. website, www.stocorp.com.

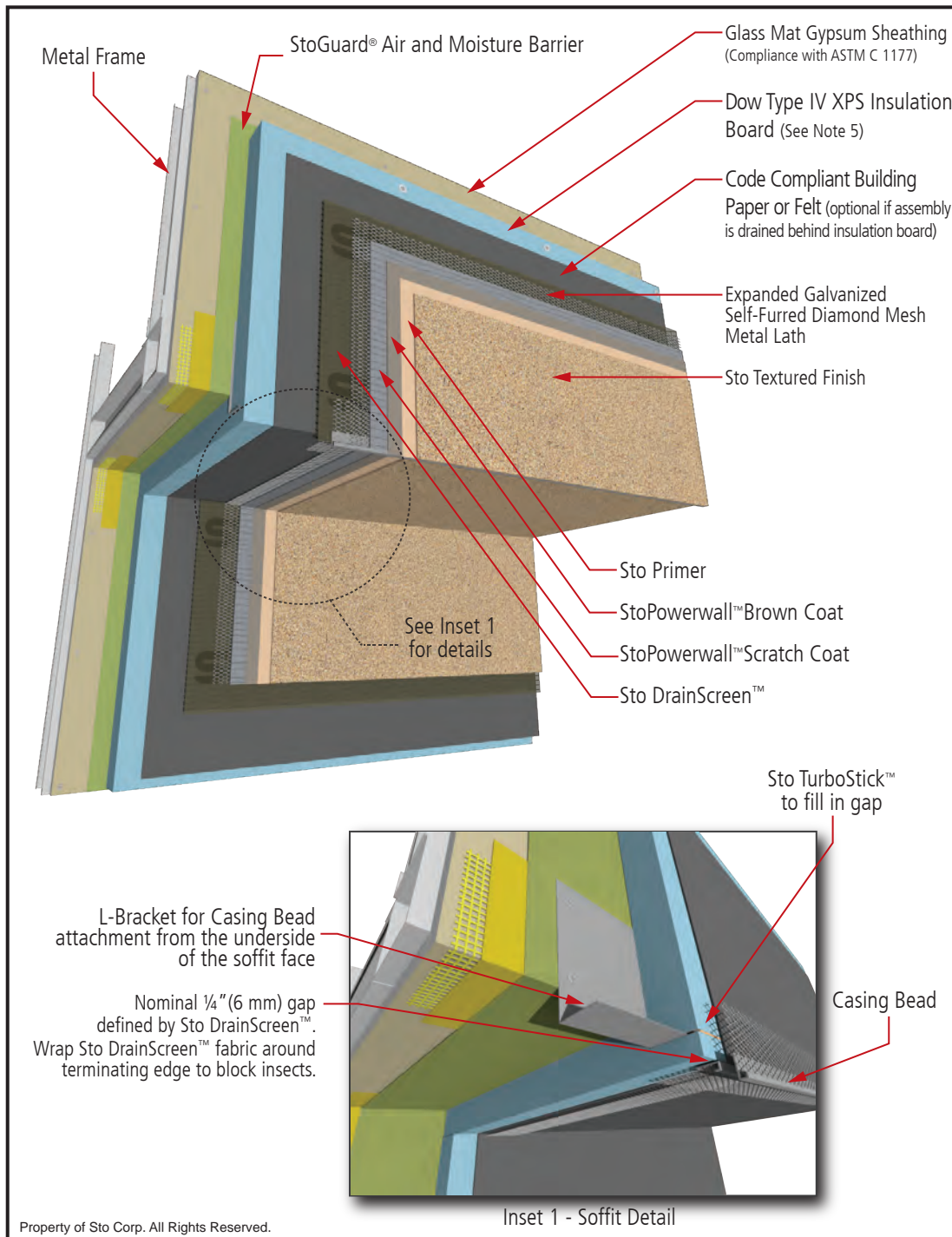
www.stocorp.com



Sto®Powerwall®ci Soffit Return

Detail No.: 63s.07

Date: March 2016



Notes:

- StoGuard® joint treatment options:
 - StoGuard® RapidFill (joints \leq 1/4 inch [6 mm])
 - Sto Gold Fill® with StoGuard® Mesh (joints \leq 1/8 inch [3 mm])
 - StoGuard® Fabric with StoGuard® air and moisture barrier (joints \leq 1/8 inch [3 mm])
- StoGuard® air and moisture barrier options:
 - Sto Gold Coat® (vapor permeable)
 - Sto EmeraldCoat® (high perm)
 - Sto VaporSeal™ (vapor impermeable)
 - Sto AirSeal™ (high perm) (Not for use with Sto Guard Fabric)
- Refer to product bulletins and Sto Specification S 507x for complete information on Sto products. Refer to StoGuard® Air and Moisture Barrier detail series 20.XX for information on detailing with StoGuard®.
- IMPORTANT. Refer to Sto Detail 63s.FP for special requirements related to Noncombustible Type construction and Fire-Resistive Rated Construction
- Provide drainage behind insulation board when appropriate, based on project design and exposure conditions. Use Sto Drainscreen™ installed behind insulation, OR use ribbons of Turbostick adhesive to install maximum 2'x8' (600x2400mm) insulation board, OR use Dow STYROFOAM™ Brand Perimate™ with channels oriented vertically, OR use other code approved method.

IMPORTANT: Components not identified as Sto are furnished by other manufacturers and are not necessarily installed by trades who install the Sto products. Refer to project specific contract documents.

www.stocorp.com

ATTENTION

Sto products are intended for use by qualified professional contractors, not consumers, as a component of a larger construction assembly as specified by a qualified design professional, general contractor or builder. They should be installed in accordance with those specifications and Sto's instructions. Sto Corp. disclaims all, and assumes no, liability for on-site inspections, for its products applied improperly, or by unqualified persons or entities, or as part of an improperly designed or constructed building, for the nonperformance of adjacent building components or assemblies, or for other construction activities beyond Sto's control. Improper use of Sto products or use as part of an improperly designed or constructed larger assembly or building may result in serious damage to Sto products, and to the structure of the building or its components.

STO CORP. DISCLAIMS ALL WARRANTIES EXPRESSED OR IMPLIED EXCEPT FOR EXPLICIT LIMITED WRITTEN WARRANTIES ISSUED TO AND ACCEPTED BY BUILDING OWNERS IN ACCORDANCE WITH STO'S WARRANTY PROGRAMS WHICH ARE SUBJECT TO CHANGE FROM TIME TO TIME. For the fullest, most current information on proper application, clean-up, mixing and other specifications and warranties, cautions and disclaimers, please refer to the Sto Corp. website, www.stocorp.com.

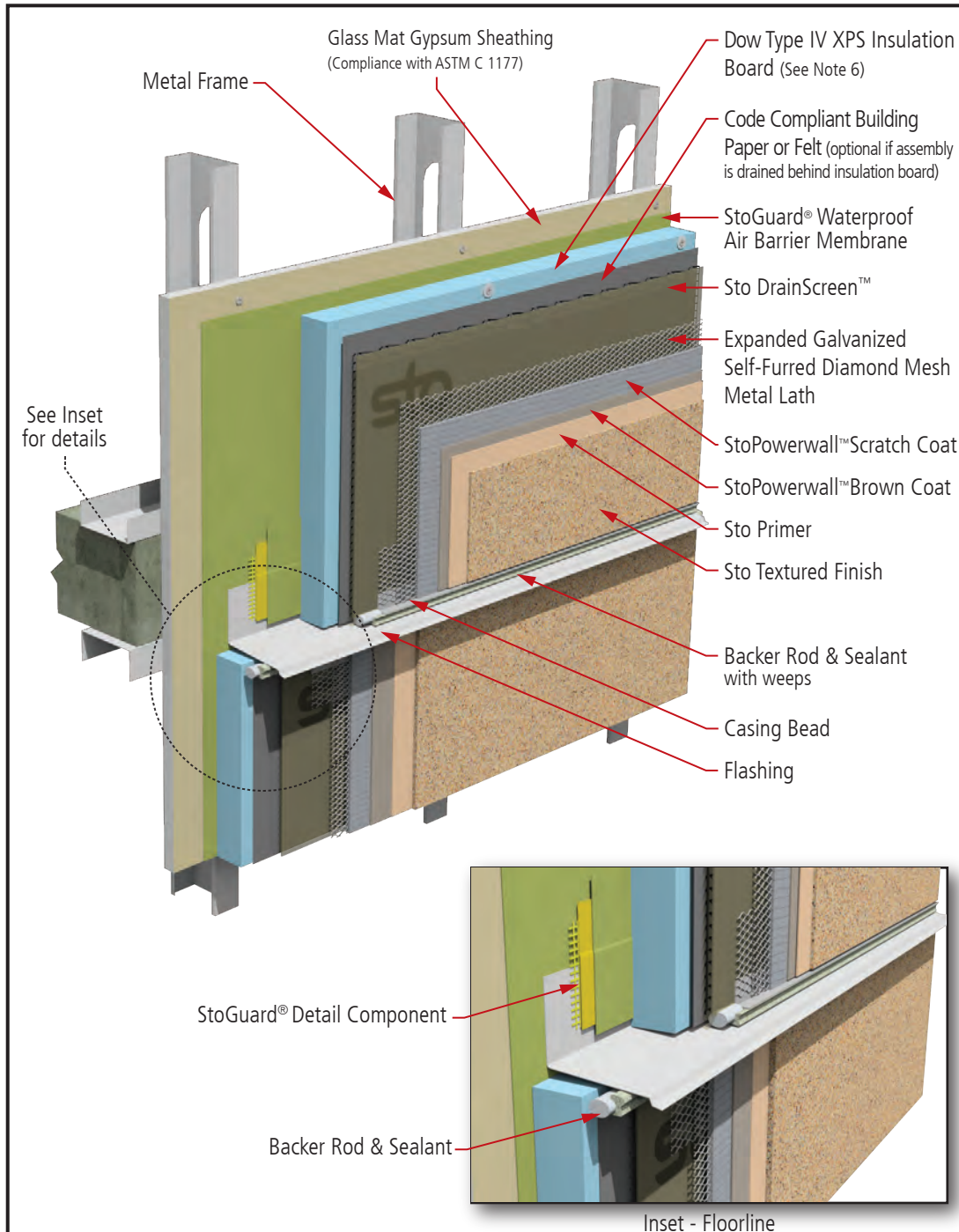


StoPowerwall®ci

Floorline without Deflection Track

Detail No.: 63s.08

Date: March 2016



Notes:

1. StoGuard® Detail Component options:
 - a. StoGuard® RapidFill
 - b. Sto Gold Fill® with StoGuard® Mesh
 - c. StoGuard® Fabric with StoGuard® air and moisture barrier
2. StoGuard® air and moisture barrier options:
 - a. Sto Gold Coat® (vapor permeable)
 - b. Sto EmeraldCoat® (high perm)
 - c. Sto VaporSeal™ (vapor impermeable)
 - d. Sto AirSeal™ (high perm)
 (Not for use with Sto Guard Fabric)
3. Refer to product bulletins and Sto Specification S 507x for complete information on Sto products. Refer to StoGuard® Air and Moisture Barrier detail series 20.XX for information on detailing with StoGuard®.
4. IMPORTANT. Refer to Sto Detail 63s.FP for special requirements related to Noncombustible Type construction and Fire-Resistive Rated Construction.
5. Design professional to determine need for deflection track. If a deflection track is required, refer to Sto Detail 63s.09 for more information.
6. Provide drainage behind insulation board when appropriate, based on project design and exposure conditions. Use Sto Drainscreen™ installed behind insulation, OR use ribbons of Turbostick adhesive to install maximum 2'x8' (600x2400mm) insulation board, OR use Dow STYROFOAM™ Brand Perimate™ with channels oriented vertically, OR use other code approved method.

IMPORTANT: Components not identified as Sto are furnished by other manufacturers and are not necessarily installed by trades who install the Sto products. Refer to project specific contract documents.

Property of Sto Corp. All Rights Reserved.

ATTENTION

Sto products are intended for use by qualified professional contractors, not consumers, as a component of a larger construction assembly as specified by a qualified design professional, general contractor or builder. They should be installed in accordance with those specifications and Sto's instructions. Sto Corp. disclaims all, and assumes no, liability for on-site inspections, for its products applied improperly, or by unqualified persons or entities, or as part of an improperly designed or constructed building, for the nonperformance of adjacent building components or assemblies, or for other construction activities beyond Sto's control. Improper use of Sto products or use as part of an improperly designed or constructed larger assembly or building may result in serious damage to Sto products, and to the structure of the building or its components.

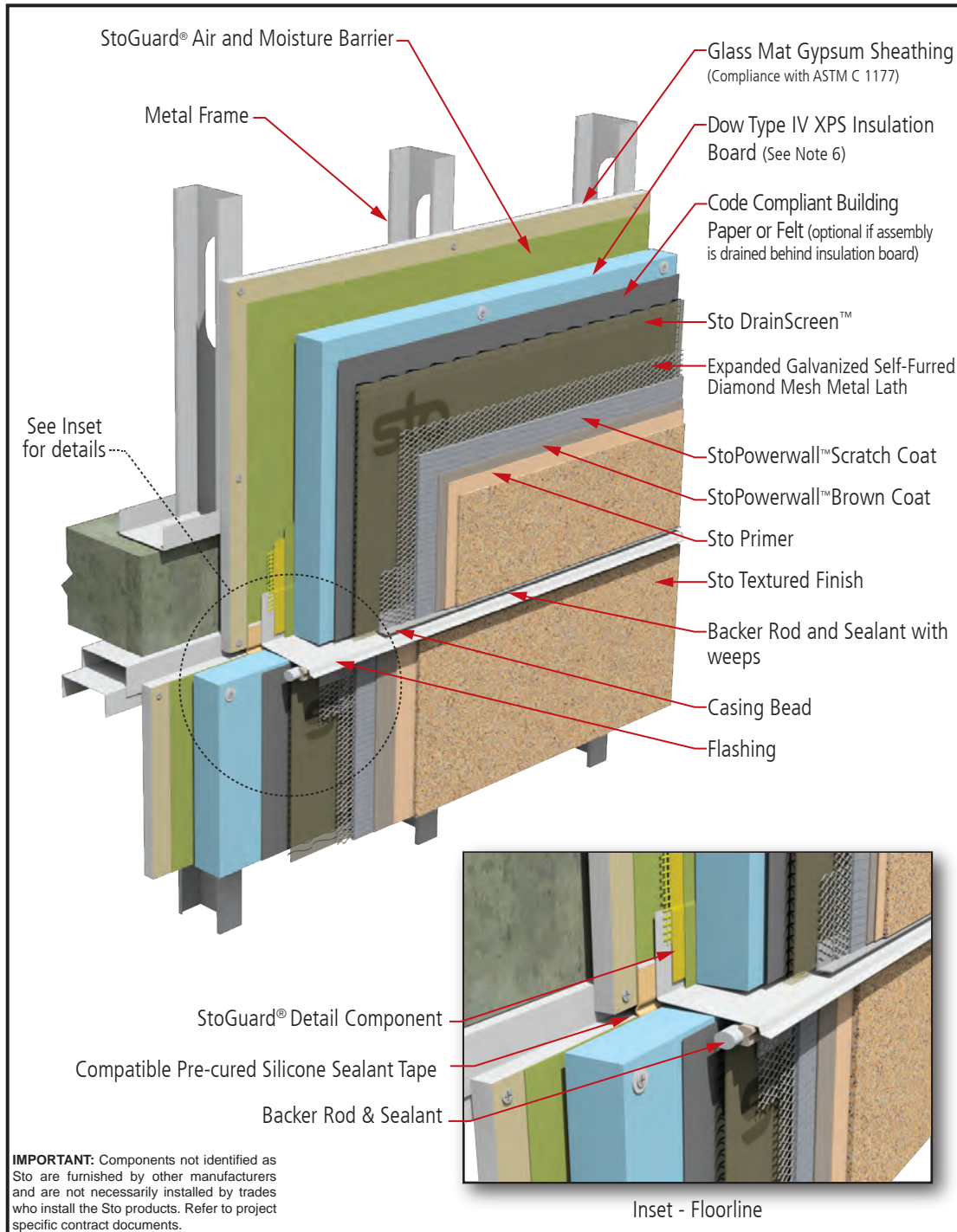
STO CORP. DISCLAIMS ALL WARRANTIES EXPRESSED OR IMPLIED EXCEPT FOR EXPLICIT LIMITED WRITTEN WARRANTIES ISSUED TO AND ACCEPTED BY BUILDING OWNERS IN ACCORDANCE WITH STO'S WARRANTY PROGRAMS WHICH ARE SUBJECT TO CHANGE FROM TIME TO TIME. For the fullest, most current information on proper application, clean-up, mixing and other specifications and warranties, cautions and disclaimers, please refer to the Sto Corp. website, www.stocorp.com.

www.stocorp.com


Sto®Powerwall®ci Floorline with Deflection Track

Detail No.: 63s.09

Date: March 2016



IMPORTANT: Components not identified as Sto are furnished by other manufacturers and are not necessarily installed by trades who install the Sto products. Refer to project specific contract documents.

Notes:

1. StoGuard® Detail Component options:
 - a. StoGuard® RapidFill
 - b. Sto Gold Fill® with StoGuard® Mesh
 - c. StoGuard® Fabric with StoGuard® air and moisture membrane
2. StoGuard® air and moisture barrier options:
 - a. Sto Gold Coat® (vapor permeable)
 - b. Sto EmeraldCoat® (high perm)
 - c. Sto VaporSeal™ (vapor impermeable)
 - d. Sto AirSeal™ (high perm)
 (Not for use with Sto Guard Fabric)
3. Attach assembly components above floor line joint to deep leg track. Attach assembly components below floor line joint to embedded track with sufficient distance from deep leg track to allow for unimpeded floor line deflection.
4. Refer to product bulletins and Sto Specification S 507x for complete information on Sto products. Refer to StoGuard® Air and Moisture Barrier detail series 20.XX for information on detailing with StoGuard®.
5. IMPORTANT. Refer to Sto Detail 63s.FP for special requirements related to Noncombustible Type construction and Fire-Resistive Rated Construction
6. Provide drainage behind insulation board when appropriate, based on project design and exposure conditions. Use Sto Drainscreen™ installed behind insulation, OR use ribbons of Turbostick adhesive to install maximum 2'x8' (600x2400mm) insulation board, OR use Dow STYROFOAM™ Brand Perimate™ with channels oriented vertically, OR use other code approved method.

Property of Sto Corp. All Rights Reserved.

www.stocorp.com

ATTENTION

Sto products are intended for use by qualified professional contractors, not consumers, as a component of a larger construction assembly as specified by a qualified design professional, general contractor or builder. They should be installed in accordance with those specifications and Sto's instructions. Sto Corp. disclaims all, and assumes no, liability for on-site inspections, for its products applied improperly, or by unqualified persons or entities, or as part of an improperly designed or constructed building, for the nonperformance of adjacent building components or assemblies, or for other construction activities beyond Sto's control. Improper use of Sto products or use as part of an improperly designed or constructed larger assembly or building may result in serious damage to Sto products, and to the structure of the building or its components.

STO CORP. DISCLAIMS ALL WARRANTIES EXPRESSED OR IMPLIED EXCEPT FOR EXPLICIT LIMITED WRITTEN WARRANTIES ISSUED TO AND ACCEPTED BY BUILDING OWNERS IN ACCORDANCE WITH STO'S WARRANTY PROGRAMS WHICH ARE SUBJECT TO CHANGE FROM TIME TO TIME. For the fullest, most current information on proper application, clean-up, mixing and other specifications and warranties, cautions and disclaimers, please refer to the Sto Corp. website, www.stocorp.com.

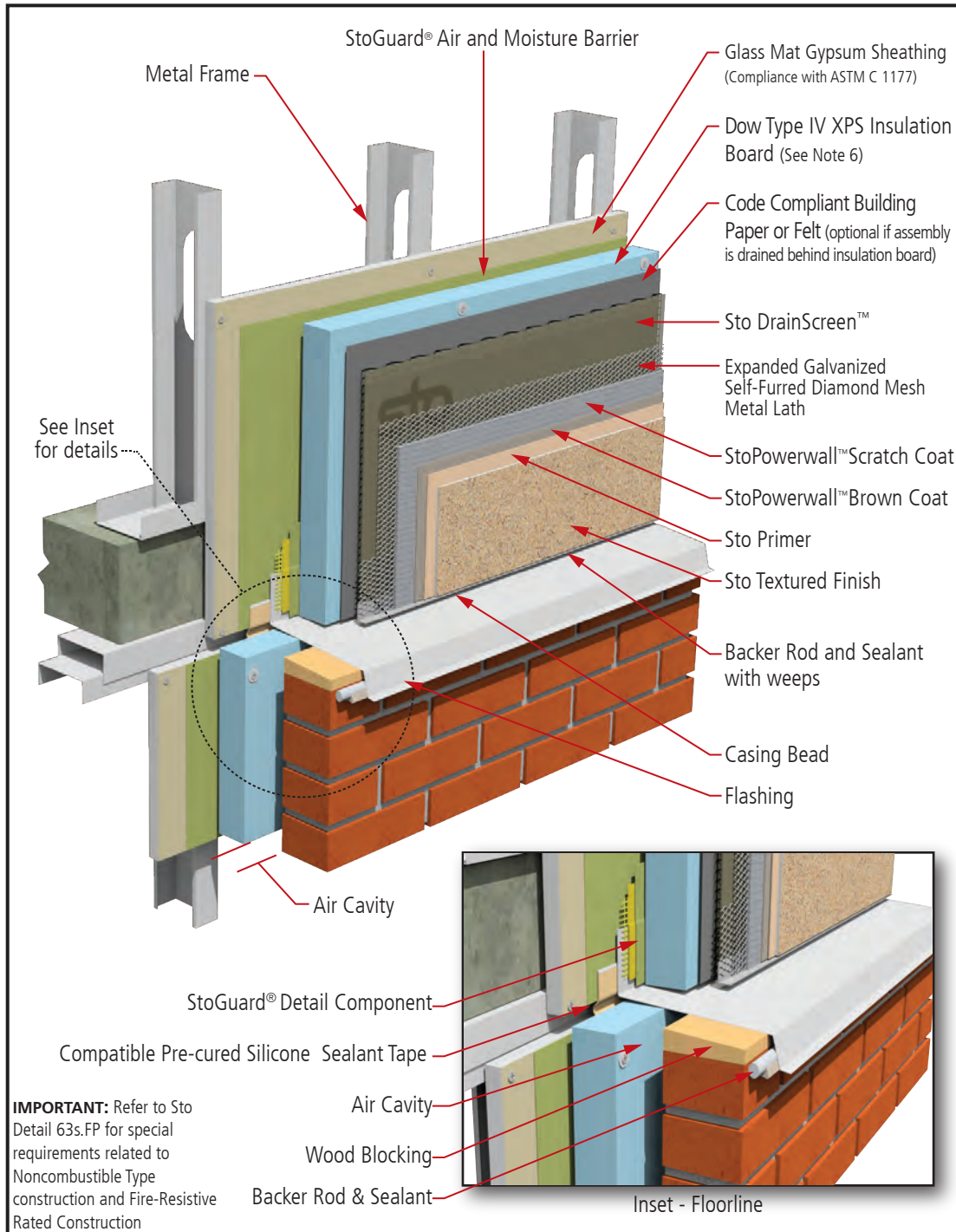


StoPowerwall®ci

Horizontal Joint at Dissimilar Material

Detail No.: 63s.10

Date: March 2016



Notes:

1. StoGuard® Detail Component options:
 - a. StoGuard® RapidFill
 - b. Sto Gold Fill® with StoGuard® Mesh
 - c. StoGuard® Fabric with StoGuard® air and moisture barrier
2. StoGuard® air and moisture barrier options:
 - a. Sto Gold Coat® (vapor permeable)
 - b. Sto EmeraldCoat® (high perm)
 - c. Sto VaporSeal™ (vapor impermeable)
 - d. Sto AirSeal™ (high perm)
 (Not for use with Sto Guard Fabric)
3. Attach assembly components above floor line joint to deep leg track. Attach assembly components below floor line joint to embedded track with sufficient distance from deep leg track to allow for unimpeded floor line deflection.
4. Refer to product bulletins for complete information on Sto products. Refer to StoGuard® Air and Moisture Barrier detail series 20.XX for information on detailing with StoGuard®.
5. Refer to product bulletins and Sto Specification S 507x for complete information on Sto products. Refer to StoGuard® Air and Moisture Barrier detail series 20.XX for information on detailing with StoGuard®.
6. Provide drainage behind insulation board when appropriate, based on project design and exposure conditions. Use Sto Drainscreen™ installed behind insulation, OR use ribbons of Turbostick adhesive to install maximum 2'x8' (600x2400mm) insulation board, OR use Dow STYROFOAM™ Brand Perimate™ with channels oriented vertically, OR use other code approved method.

IMPORTANT: Refer to Sto Detail 63s.FP for special requirements related to Noncombustible Type construction and Fire-Resistive Rated Construction

ATTENTION **IMPORTANT:** Components not identified as Sto are furnished by other manufacturers and are not necessarily installed by trades who install the Sto products. Refer to project specific contract documents.

Property of Sto Corp. All Rights Reserved.
www.stocorp.com

Sto products are intended for use by qualified professional contractors, not consumers, as a component of a larger construction assembly as specified by a qualified design professional, general contractor or builder. They should be installed in accordance with those specifications and Sto's instructions. Sto Corp. disclaims all, and assumes no, liability for on-site inspections, for its products applied improperly, or by unqualified persons or entities, or as part of an improperly designed or constructed building, for the nonperformance of adjacent building components or assemblies, or for other construction activities beyond Sto's control. Improper use of Sto products or use as part of an improperly designed or constructed larger assembly or building may result in serious damage to Sto products, and to the structure of the building or its components.

STO CORP. DISCLAIMS ALL WARRANTIES EXPRESSED OR IMPLIED EXCEPT FOR EXPLICIT LIMITED WRITTEN WARRANTIES ISSUED TO AND ACCEPTED BY BUILDING OWNERS IN ACCORDANCE WITH STO'S WARRANTY PROGRAMS WHICH ARE SUBJECT TO CHANGE FROM TIME TO TIME. For the fullest, most current information on proper application, clean-up, mixing and other specifications and warranties, cautions and disclaimers, please refer to the Sto Corp. website, www.stocorp.com.

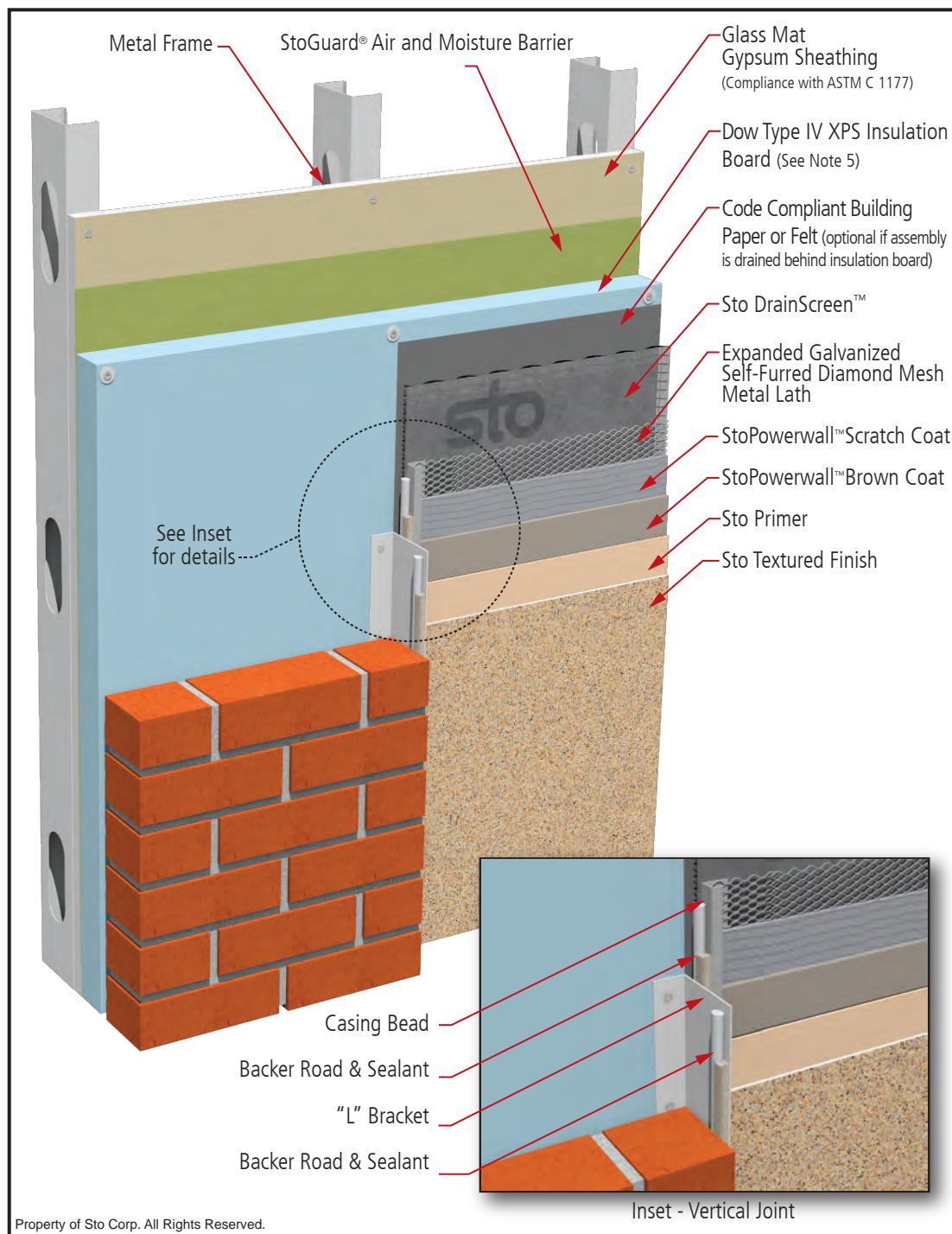


StoPowerwall®ci

Vertical Joint at Dissimilar Material

Detail No.: 63s.11

Date: March 2016



Notes:

1. StoGuard® Joint Treatment options:

- StoGuard® RapidFill (joints \leq 1/4 inch [6 mm])
- Sto Gold Fill® with StoGuard® Mesh (joints \leq 1/8 inch [3 mm])
- StoGuard® Fabric with StoGuard® air and moisture barrier (joints \leq 1/8 inch [3 mm])

2. StoGuard® air and moisture barrier options:

- Sto Gold Coat® (vapor permeable)
- Sto EmeraldCoat® (high perm)
- Sto VaporSeal™ (vapor impermeable)
- Sto AirSeal™ (high perm) (Not for use with Sto Guard Fabric)

3. Refer to product bulletins and Sto Specification S 507x for complete information on Sto products. Refer to StoGuard® Air and Moisture Barrier detail series 20.XX for information on detailing with StoGuard®.

4. IMPORTANT. Refer to Sto Detail 63Ps.FP for special requirements related to Noncombustible Type construction and Fire-Resistive Rated Construction

5. Provide drainage behind insulation board when appropriate, based on project design and exposure conditions. Use Sto Drainscreen™ installed behind insulation, OR use ribbons of Turbostick adhesive to install maximum 2'x8' (600x2400mm) insulation board, OR use Dow STYROFOAM™ Brand Perimate™ with channels oriented vertically, OR use other code approved method.

IMPORTANT: Components not identified as Sto are furnished by other manufacturers and are not necessarily installed by trades who install the Sto products. Refer to project specific contract documents.

Property of Sto Corp. All Rights Reserved.

ATTENTION

Sto products are intended for use by qualified professional contractors, not consumers, as a component of a larger construction assembly as specified by a qualified design professional, general contractor or builder. They should be installed in accordance with those specifications and Sto's instructions. Sto Corp. disclaims all, and assumes no, liability for on-site inspections, for its products applied improperly, or by unqualified persons or entities, or as part of an improperly designed or constructed building, for the nonperformance of adjacent building components or assemblies, or for other construction activities beyond Sto's control. Improper use of Sto products or use as part of an improperly designed or constructed larger assembly or building may result in serious damage to Sto products, and to the structure of the building or its components.

STO CORP. DISCLAIMS ALL WARRANTIES EXPRESSED OR IMPLIED EXCEPT FOR EXPLICIT LIMITED WRITTEN WARRANTIES ISSUED TO AND ACCEPTED BY BUILDING OWNERS IN ACCORDANCE WITH STO'S WARRANTY PROGRAMS WHICH ARE SUBJECT TO CHANGE FROM TIME TO TIME. For the fullest, most current information on proper application, clean-up, mixing and other specifications and warranties, cautions and disclaimers, please refer to the Sto Corp. website, www.stocorp.com.

www.stocorp.com

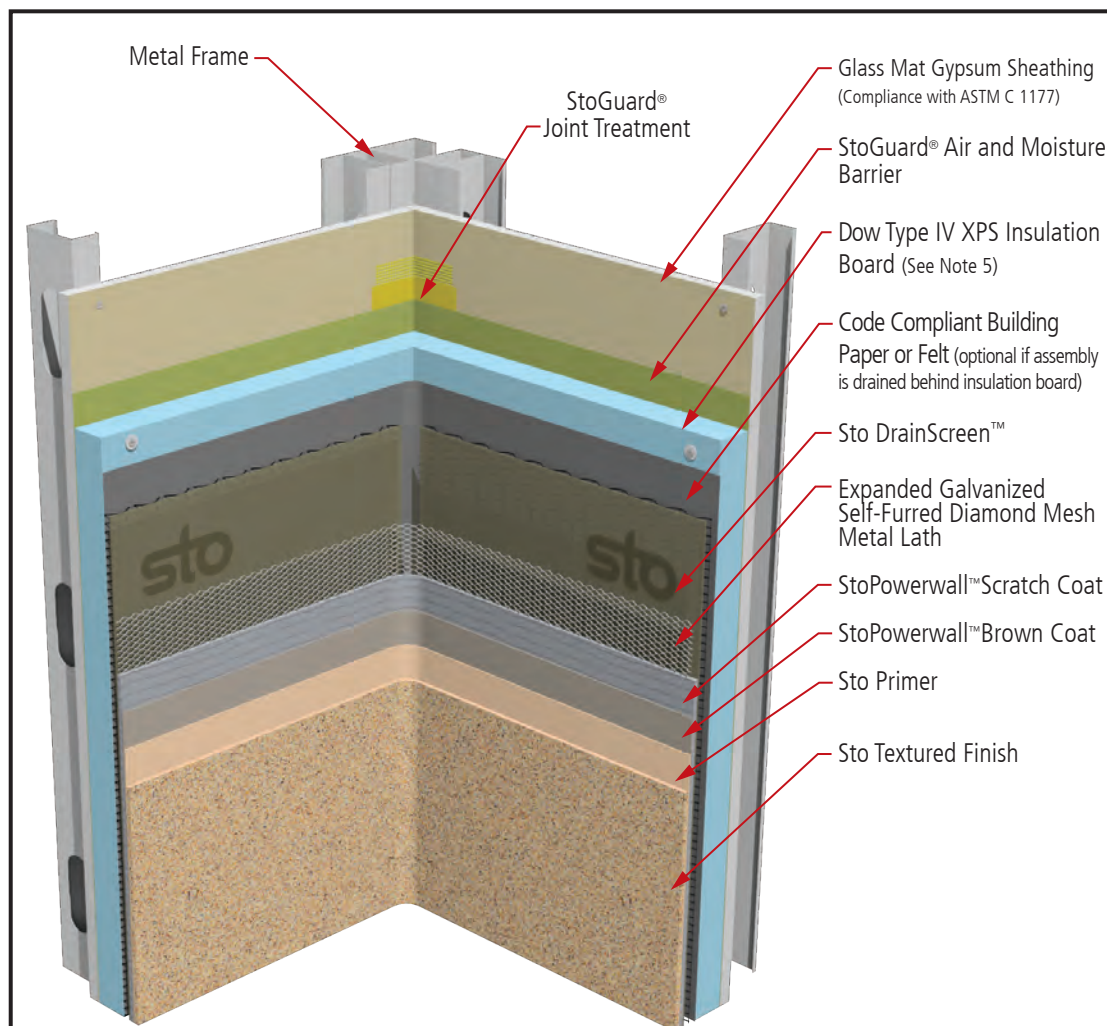


StoPowerwall®ci

Vertical Joint at Inside Corner: Common Substrate

Detail No.: 63s.12

Date: March 2016



Notes:

1. StoGuard® Joint Treatment options:

- StoGuard® RapidFill (joints ≤ 1/4 inch [6 mm])
- Sto Gold Fill® with StoGuard® Mesh (joints ≤ 1/8 inch [3 mm])
- StoGuard® Fabric with StoGuard® air and moisture barrier (joints ≤ 1/8 inch [3 mm])

2. StoGuard® air and moisture barrier options:

- Sto Gold Coat® (vapor permeable)
 - Sto EmeraldCoat® (high perm)
 - Sto VaporSeal™ (vapor impermeable)
 - Sto AirSeal™ (high perm)
- (Not for use with Sto Guard Fabric)

3. Refer to product bulletins and Sto Specification S 507x for complete information on Sto products. Refer to StoGuard® Air and Moisture Barrier detail series 20.XX for information on detailing with StoGuard®.

4. IMPORTANT. Refer to Sto Detail 63s.FP for special requirements related to Noncombustible Type construction and Fire-Resistive Rated Construction

5. Provide drainage behind insulation board when appropriate, based on project design and exposure conditions. Use Sto Drainscreen™ installed behind insulation, OR use ribbons of Turbostick adhesive to install maximum 2'x8' (600x2400mm) insulation board, OR use Dow STYROFOAM™ Brand Perimate™ with channels oriented vertically, OR use other code approved method.

IMPORTANT: Components not identified as Sto are furnished by other manufacturers and are not necessarily installed by trades who install the Sto products. Refer to project specific contract documents.

Property of Sto Corp. All Rights Reserved.

ATTENTION

Sto products are intended for use by qualified professional contractors, not consumers, as a component of a larger construction assembly as specified by a qualified design professional, general contractor or builder. They should be installed in accordance with those specifications and Sto's instructions. Sto Corp. disclaims all, and assumes no, liability for on-site inspections, for its products applied improperly, or by unqualified persons or entities, or as part of an improperly designed or constructed building, for the nonperformance of adjacent building components or assemblies, or for other construction activities beyond Sto's control. Improper use of Sto products or use as part of an improperly designed or constructed larger assembly or building may result in serious damage to Sto products, and to the structure of the building or its components.

STO CORP. DISCLAIMS ALL WARRANTIES EXPRESSED OR IMPLIED EXCEPT FOR EXPLICIT LIMITED WRITTEN WARRANTIES ISSUED TO AND ACCEPTED BY BUILDING OWNERS IN ACCORDANCE WITH STO'S WARRANTY PROGRAMS WHICH ARE SUBJECT TO CHANGE FROM TIME TO TIME. For the fullest, most current information on proper application, clean-up, mixing and other specifications and warranties, cautions and disclaimers, please refer to the Sto Corp. website, www.stocorp.com.

www.stocorp.com

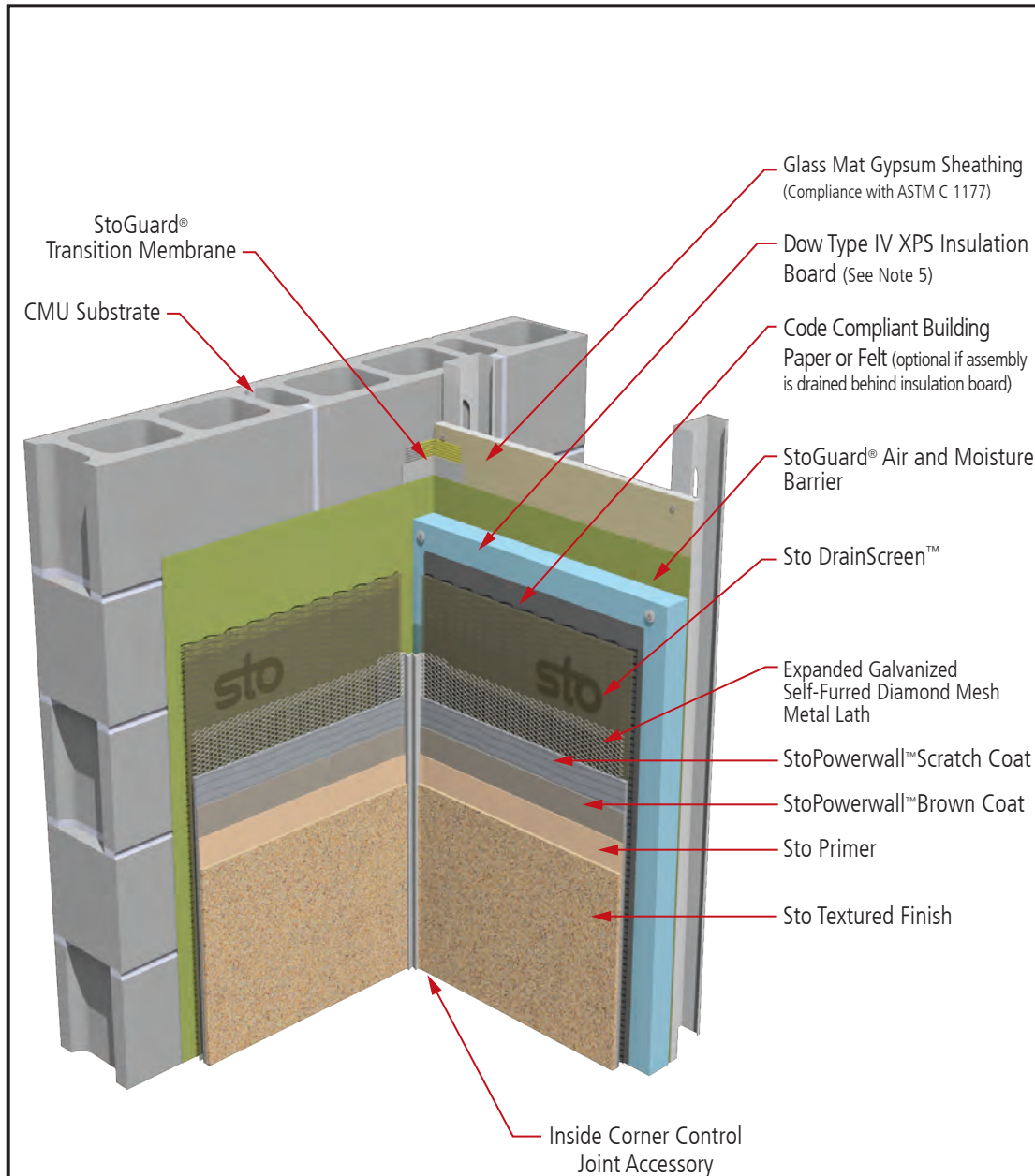


StoPowerwall®ci

Vertical Joint at Inside Corner: Different Substrate

Detail No.: 63s.13

Date: March 2016



Notes:

1. StoGuard® Detail Component options:

- StoGuard® RapidFill (joints ≤ 1/4 inch [6 mm])
- Sto Gold Fill® with StoGuard® Mesh (joints ≤ 1/8 inch [3 mm])
- StoGuard® Fabric with StoGuard® air and moisture barrier (joints ≤ 1/8 inch [3 mm])
- StoGuard® Tape (joints ≤ 1/4 inch [6 mm])

2. StoGuard® air and moisture barrier options:

- Sto Gold Coat® (vapor permeable)
 - Sto EmeraldCoat® (high perm)
 - Sto VaporSeal™ (vapor impermeable)
 - Sto AirSeal™ (high perm)
- (Not for use with Sto Guard Fabric)

3. Refer to product bulletins and Sto Specification S 507x for complete information on Sto products. Refer to StoGuard® Air and Moisture Barrier detail series 20.XX for information on detailing with StoGuard®.

4. IMPORTANT. Refer to Sto Detail 63s.FP for special requirements related to Noncombustible Type construction and Fire-Resistive Rated Construction

5. Provide drainage behind insulation board when appropriate, based on project design and exposure conditions. Use Sto Drainscreen™ installed behind insulation, OR use ribbons of Turbostick adhesive to install maximum 2'x8' (600x2400mm) insulation board, OR use Dow STYROFOAM™ Brand Perimate™ with channels oriented vertically, OR use other code approved method.

IMPORTANT: Components not identified as Sto are furnished by other manufacturers and are not necessarily installed by trades who install the Sto products. Refer to project specific contract documents.

Property of Sto Corp. All Rights Reserved.

ATTENTION

Sto products are intended for use by qualified professional contractors, not consumers, as a component of a larger construction assembly as specified by a qualified design professional, general contractor or builder. They should be installed in accordance with those specifications and Sto's instructions. Sto Corp. disclaims all, and assumes no, liability for on-site inspections, for its products applied improperly, or by unqualified persons or entities, or as part of an improperly designed or constructed building, for the nonperformance of adjacent building components or assemblies, or for other construction activities beyond Sto's control. Improper use of Sto products or use as part of an improperly designed or constructed larger assembly or building may result in serious damage to Sto products, and to the structure of the building or its components.

STO CORP. DISCLAIMS ALL WARRANTIES EXPRESSED OR IMPLIED EXCEPT FOR EXPLICIT LIMITED WRITTEN WARRANTIES ISSUED TO AND ACCEPTED BY BUILDING OWNERS IN ACCORDANCE WITH STO'S WARRANTY PROGRAMS WHICH ARE SUBJECT TO CHANGE FROM TIME TO TIME. For the fullest, most current information on proper application, clean-up, mixing and other specifications and warranties, cautions and disclaimers, please refer to the Sto Corp. website, www.stocorp.com.

www.stocorp.com

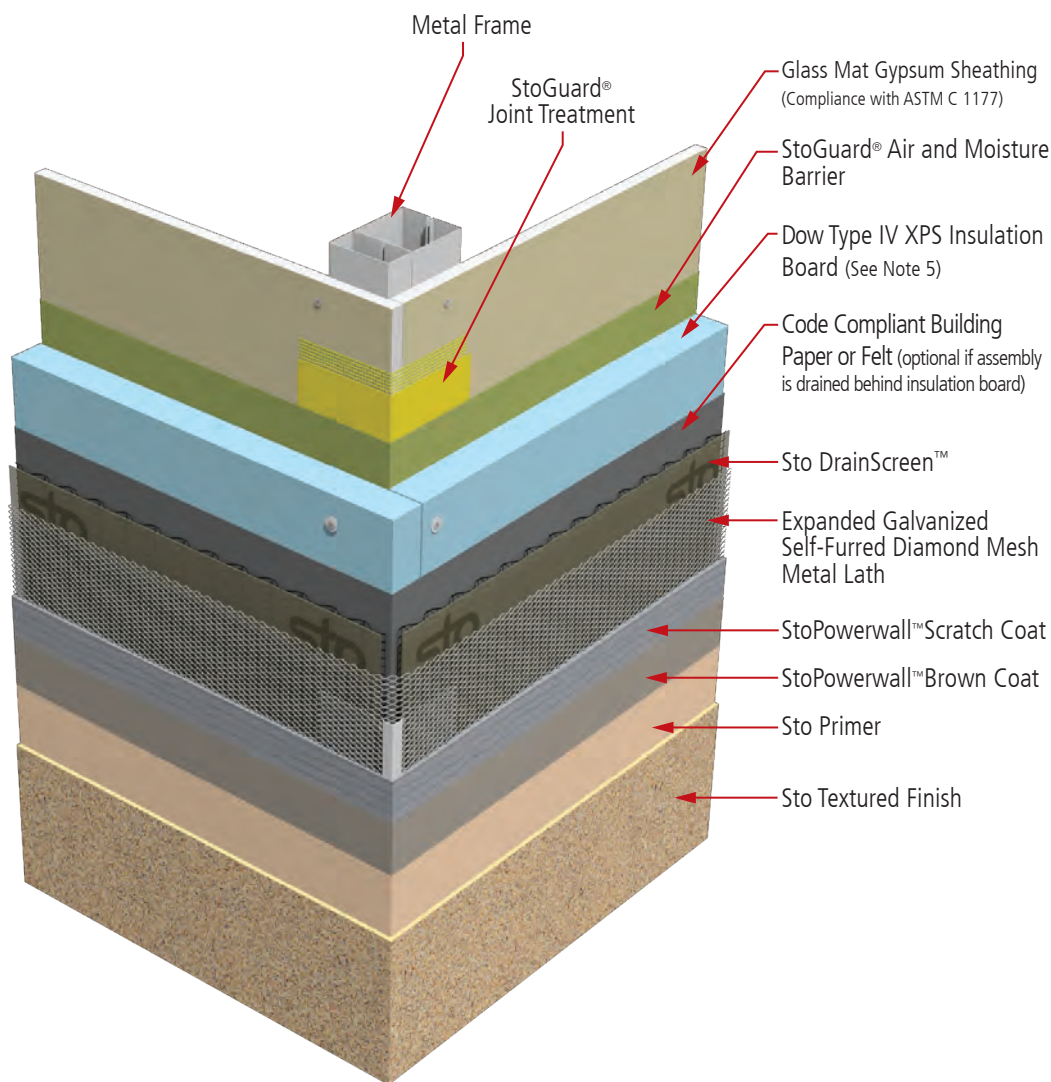


StoPowerwall®ci

Outside Corner: Common Substrate

Detail No.: 63s.14

Date: March 2016



Notes:

1. StoGuard® Joint Treatment options:

- StoGuard® RapidFill (joints ≤ 1/4 inch [6 mm])
- Sto Gold Fill® with StoGuard® Mesh (joints ≤ 1/8 inch [3 mm])
- StoGuard® Fabric with StoGuard® air and moisture barrier (joints ≤ 1/8 inch [3 mm])

2. StoGuard® air and moisture barrier options:

- Sto Gold Coat® (vapor permeable)
- Sto EmeraldCoat® (high perm)
- Sto VaporSeal™ (vapor impermeable)
- Sto AirSeal™ (high perm) (Not for use with Sto Guard Fabric)

3. Refer to product bulletins and Sto Specification S 507x for complete information on Sto products. Refer to StoGuard® Air and Moisture Barrier detail series 20.XX for information on detailing with StoGuard®.

4. IMPORTANT. Refer to Sto Detail 63s.FP for special requirements related to Noncombustible Type construction and Fire-Resistive Rated Construction

5. Provide drainage behind insulation board when appropriate, based on project design and exposure conditions. Use Sto DrainScreen™ installed behind insulation, OR use ribbons of Turbostick adhesive to install maximum 2'x8' (600x2400mm) insulation board, OR use Dow STYROFOAM™ Brand Perimate™ with channels oriented vertically, OR use other code approved method.

IMPORTANT: Components not identified as Sto are furnished by other manufacturers and are not necessarily installed by trades who install the Sto products. Refer to project specific contract documents.

Property of Sto Corp. All Rights Reserved.

ATTENTION

Sto products are intended for use by qualified professional contractors, not consumers, as a component of a larger construction assembly as specified by a qualified design professional, general contractor or builder. They should be installed in accordance with those specifications and Sto's instructions. Sto Corp. disclaims all, and assumes no, liability for on-site inspections, for its products applied improperly, or by unqualified persons or entities, or as part of an improperly designed or constructed building, for the nonperformance of adjacent building components or assemblies, or for other construction activities beyond Sto's control. Improper use of Sto products or use as part of an improperly designed or constructed larger assembly or building may result in serious damage to Sto products, and to the structure of the building or its components.

STO CORP. DISCLAIMS ALL WARRANTIES EXPRESSED OR IMPLIED EXCEPT FOR EXPLICIT LIMITED WRITTEN WARRANTIES ISSUED TO AND ACCEPTED BY BUILDING OWNERS IN ACCORDANCE WITH STO'S WARRANTY PROGRAMS WHICH ARE SUBJECT TO CHANGE FROM TIME TO TIME. For the fullest, most current information on proper application, clean-up, mixing and other specifications and warranties, cautions and disclaimers, please refer to the Sto Corp. website, www.stocorp.com.

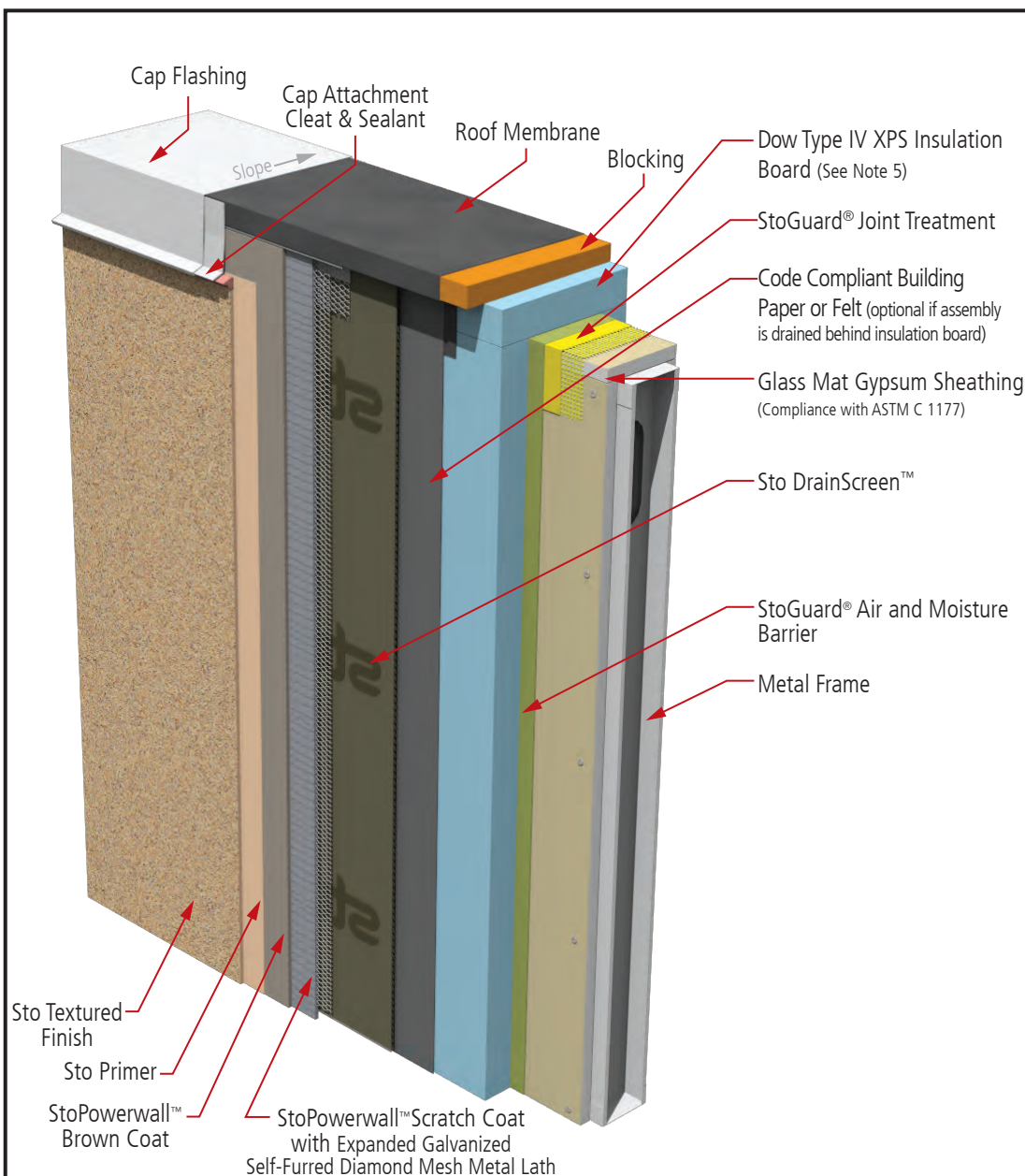
www.stocorp.com



Sto®Powerwall®ci Termination at Parapet

Detail No.: 63s.15

Date: March 2015



Notes:

1. StoGuard® Joint Treatment options:

- StoGuard® RapidFill (joints \leq 1/4 inch [6 mm])
- Sto Gold Fill® with StoGuard® Mesh (joints \leq 1/8 inch [3 mm])
- StoGuard® Fabric with StoGuard® air and moisture barrier (joints \leq 1/8 inch [3 mm])

2. StoGuard® air and moisture barrier options:

- Sto Gold Coat® (vapor permeable)
- Sto EmeraldCoat® (high perm)
- Sto VaporSeal™ (vapor impermeable)
- Sto AirSeal™ (high perm)
(Not for use with Sto Guard Fabric)

3. Refer to product bulletins and Sto Specification S 507x for complete information on Sto products. Refer to StoGuard® Air and Moisture Barrier detail series 20.XX for information on detailing with StoGuard®.

4. IMPORTANT. Refer to Sto Detail 63s.FP for special requirements related to Noncombustible Type construction and Fire-Resistive Rated Construction

5. Provide drainage behind insulation board when appropriate, based on project design and exposure conditions. Use Sto Drainscreen™ installed behind insulation, OR use ribbons of Turbostick adhesive to install maximum 2'x8' (600x2400mm) insulation board, OR use Dow STYROFOAM™ Brand Perimate™ with channels oriented vertically, OR use other code approved method.

IMPORTANT: Components not identified as Sto are furnished by other manufacturers and are not necessarily installed by trades who install the Sto products. Refer to project specific contract documents.

Property of Sto Corp. All Rights Reserved.

ATTENTION

Sto products are intended for use by qualified professional contractors, not consumers, as a component of a larger construction assembly as specified by a qualified design professional, general contractor or builder. They should be installed in accordance with those specifications and Sto's instructions. Sto Corp. disclaims all, and assumes no, liability for on-site inspections, for its products applied improperly, or by unqualified persons or entities, or as part of an improperly designed or constructed building, for the nonperformance of adjacent building components or assemblies, or for other construction activities beyond Sto's control. Improper use of Sto products or use as part of an improperly designed or constructed larger assembly or building may result in serious damage to Sto products, and to the structure of the building or its components.

STO CORP. DISCLAIMS ALL WARRANTIES EXPRESSED OR IMPLIED EXCEPT FOR EXPLICIT LIMITED WRITTEN WARRANTIES ISSUED TO AND ACCEPTED BY BUILDING OWNERS IN ACCORDANCE WITH STO'S WARRANTY PROGRAMS WHICH ARE SUBJECT TO CHANGE FROM TIME TO TIME. For the fullest, most current information on proper application, clean-up, mixing and other specifications and warranties, cautions and disclaimers, please refer to the Sto Corp. website, www.stocorp.com.

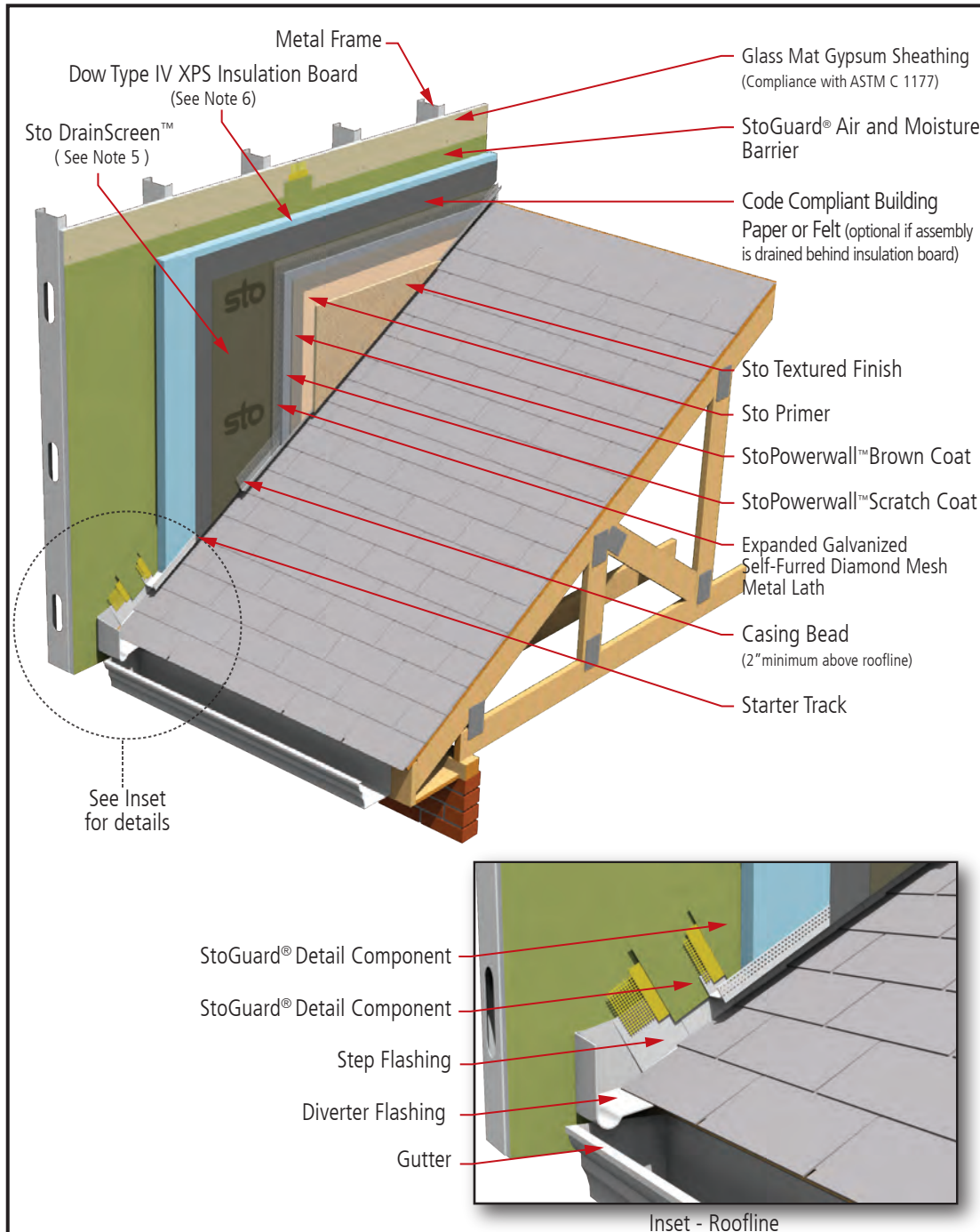
www.stocorp.com



Sto®Powerwall®ci Roof/Wall Abutment

Detail No.: 63s.16

Date: March 2016



Notes:

1. StoGuard® Detail Component options:

- StoGuard® RapidFill (joints $\leq 1/4$ inch [6 mm])
- Sto Gold Fill® with StoGuard® Mesh (joints $\leq 1/8$ inch [3 mm])
- StoGuard® Fabric with StoGuard® air and moisture barrier (joints $\leq 1/8$ inch [3 mm])

2. StoGuard® air and moisture barrier options:

- Sto Gold Coat® (vapor permeable)
- Sto EmeraldCoat® (high perm)
- Sto VaporSeal™ (vapor impermeable)
- Sto AirSeal™ (high perm) (Not for use with Sto Guard Fabric)

3. Refer to product bulletins and Sto Specification S 507x for complete information on Sto products. Refer to StoGuard® Air and Moisture Barrier detail series 20.XX for information on detailing with StoGuard®.

4. IMPORTANT: Refer to Sto Detail 63s.FP for special requirements related to Noncombustible Type construction and Fire-Resistive Rated Construction

5. Nominal $1/4$ " (6 mm) gap defined by Sto DrainScreen™. Wrap Sto DrainScreen™ fabric around terminating edge to block insects.

6. Provide drainage behind insulation board when appropriate, based on project design and exposure conditions. Use Sto Drainscreen™ installed behind insulation, OR use ribbons of Turbostick adhesive to install maximum 2'x8' (600x2400mm) insulation board, OR use Dow STYROFOAM™ Brand Perimate™ with channels oriented vertically, OR use other code approved method.

IMPORTANT: Components not identified as Sto are furnished by other manufacturers and are not necessarily installed by trades who install the Sto products. Refer to project specific contract documents.

Property of Sto Corp. All Rights Reserved.

ATTENTION

Sto products are intended for use by qualified professional contractors, not consumers, as a component of a larger construction assembly as specified by a qualified design professional, general contractor or builder. They should be installed in accordance with those specifications and Sto's instructions. Sto Corp. disclaims all, and assumes no, liability for on-site inspections, for its products applied improperly, or by unqualified persons or entities, or as part of an improperly designed or constructed building, for the nonperformance of adjacent building components or assemblies, or for other construction activities beyond Sto's control. Improper use of Sto products or use as part of an improperly designed or constructed larger assembly or building may result in serious damage to Sto products, and to the structure of the building or its components.

STO CORP. DISCLAIMS ALL WARRANTIES EXPRESSED OR IMPLIED EXCEPT FOR EXPLICIT LIMITED WRITTEN WARRANTIES ISSUED TO AND ACCEPTED BY BUILDING OWNERS IN ACCORDANCE WITH STO'S WARRANTY PROGRAMS WHICH ARE SUBJECT TO CHANGE FROM TIME TO TIME. For the fullest, most current information on proper application, clean-up, mixing and other specifications and warranties, cautions and disclaimers, please refer to the Sto Corp. website, www.stocorp.com.

www.stocorp.com

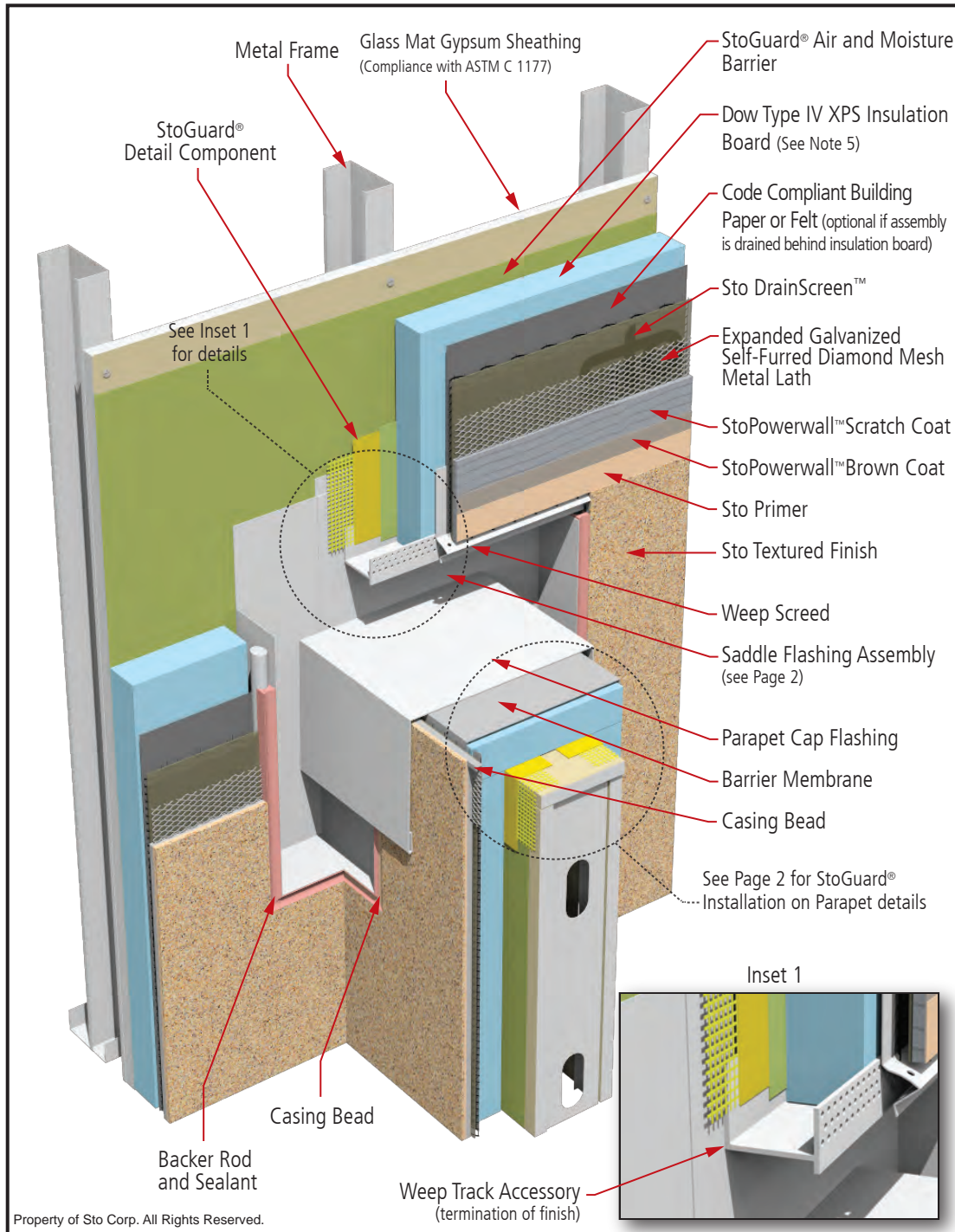


StoPowerwall®ci Saddle Flashing

Detail No.: 63s.17

Date: March 2016

Page 1 of 2



Notes:

1. StoGuard® Detail Component options:

- a. StoGuard® RapidFill
- b. Sto Gold Fill® with StoGuard® Mesh
- c. StoGuard® Fabric with StoGuard® air and moisture barrier

2. StoGuard® air and moisture barrier options:

- a. Sto Gold Coat® (vapor permeable)
- b. Sto EmeraldCoat® (high perm)
- c. Sto VaporSeal™ (vapor impermeable)
- d. Sto AirSeal™ (high perm)
(Not for use with Sto Guard Fabric)

3. Refer to product bulletins and Sto Specification S 507x for complete information on Sto products. Refer to StoGuard® Air and Moisture Barrier detail series 20.XX for information on detailing with StoGuard®.

4. IMPORTANT: Refer to Sto Detail 63s.FP for special requirements related to Noncombustible Type construction and Fire-Resistive Rated Construction

5. Provide drainage behind insulation board when appropriate, based on project design and exposure conditions. Use Sto Drainscreen™ installed behind insulation, OR use ribbons of Turbostick adhesive to install maximum 2'x8' (600x2400mm) insulation board, OR use Dow STYROFOAM™ Brand Perimate™ with channels oriented vertically, OR use other code approved method.

IMPORTANT: Components not identified as Sto are furnished by other manufacturers and are not necessarily installed by trades who install the Sto products. Refer to project specific contract documents.

www.stocorp.com

ATTENTION

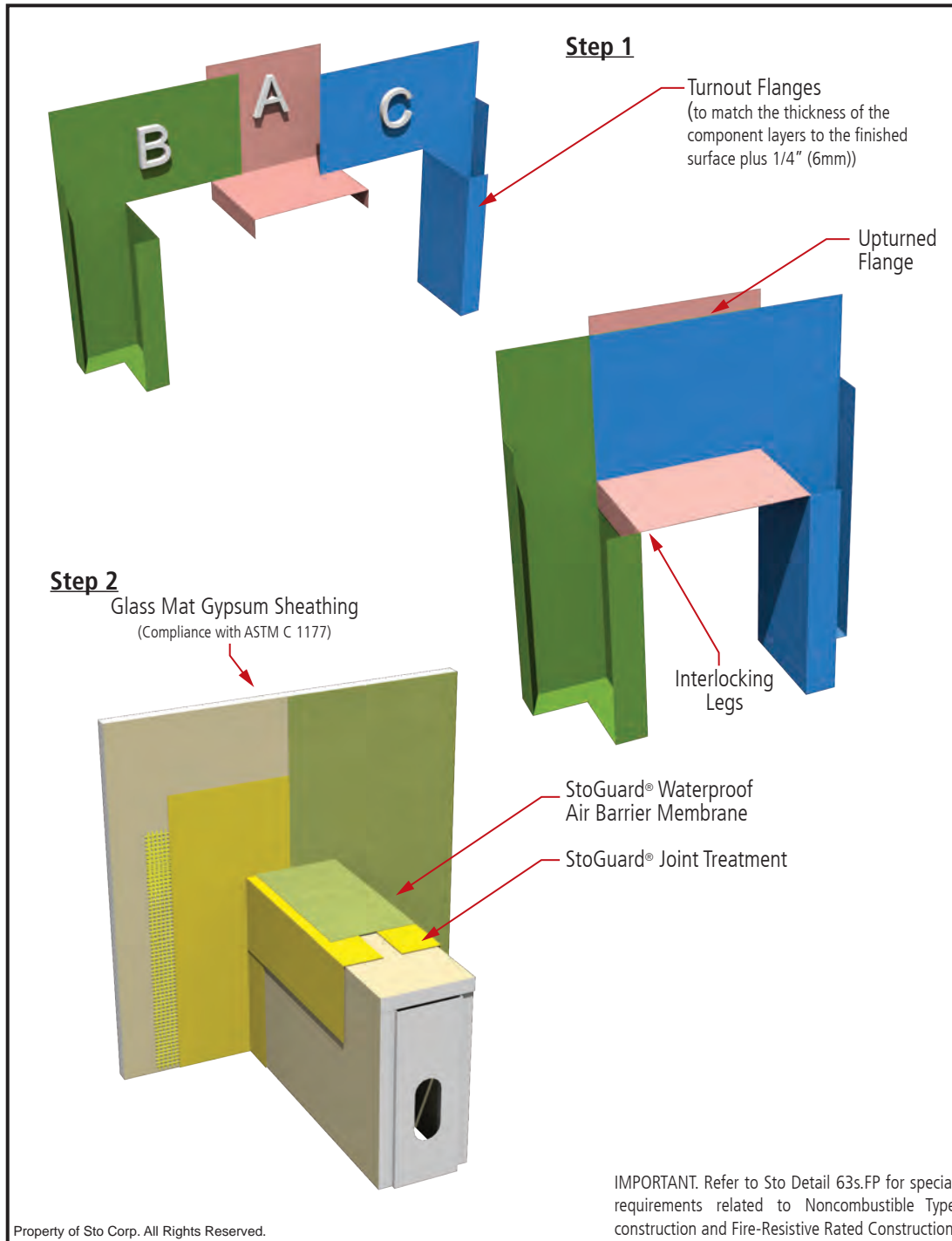
Sto products are intended for use by qualified professional contractors, not consumers, as a component of a larger construction assembly as specified by a qualified design professional, general contractor or builder. They should be installed in accordance with those specifications and Sto's instructions. Sto Corp. disclaims all, and assumes no, liability for on-site inspections, for its products applied improperly, or by unqualified persons or entities, or as part of an improperly designed or constructed building, for the nonperformance of adjacent building components or assemblies, or for other construction activities beyond Sto's control. Improper use of Sto products or use as part of an improperly designed or constructed larger assembly or building may result in serious damage to Sto products, and to the structure of the building or its components.

STO CORP. DISCLAIMS ALL WARRANTIES EXPRESSED OR IMPLIED EXCEPT FOR EXPLICIT LIMITED WRITTEN WARRANTIES ISSUED TO AND ACCEPTED BY BUILDING OWNERS IN ACCORDANCE WITH STO'S WARRANTY PROGRAMS WHICH ARE SUBJECT TO CHANGE FROM TIME TO TIME. For the fullest, most current information on proper application, clean-up, mixing and other specifications and warranties, cautions and disclaimers, please refer to the Sto Corp. website, www.stocorp.com.



StoPowerwall®ci Saddle Flashing

Detail No.: 63s.17
Date: March 2016
Page 2 of 2



Notes:

Step 1

1. Parapet flashing pieces 'B' and 'C' are folded as shown and are mirror images of each other. The flat upper portions are designed to overlap over the parapet wall and flat against the upper, intersecting wall. The folded turnouts are to match the thickness of the component layers to the finished surface plus 1/4" (6mm).

2. Parapet flashing piece 'A' is designed to straddle the parapet wall. The upturned flange is placed behind the upper flat flanges of flashing piece 'B' and 'C' and the two downturned legs interlock over the lower portions of the flashing pieces 'B' and 'C' respectively, in a shingle like fashion.

Step 2

1. StoGuard® Joint Treatment options:

- a. StoGuard® RapidSeal® with StoGuard® Mesh (joints ≤ 1/4 inch [6 mm])
- b. Sto Gold Fill® with StoGuard® Mesh (joints ≤ 1/8 inch [3 mm])
- c. StoGuard® Fabric with StoGuard® waterproof air barrier membrane (joints ≤ 1/8 inch [3 mm])

2. StoGuard® waterproof air barrier membrane options:

- a. Sto Gold Coat® (vapor permeable)
 - b. Sto EmeraldCoat® (high perm)
 - c. Sto VaporSeal™ (vapor impermeable)
 - d. Sto AirSeal™ (high perm)
- (Not for use with Sto Guard Fabric)

3. Refer to product bulletins and Sto Specification S 507 for complete information on Sto products. Refer to StoGuard® Waterproof Air Barrier detail series 20.XX for information on detailing with StoGuard®.

IMPORTANT: Components not identified as Sto are furnished by other manufacturers and are not necessarily installed by trades who install the Sto products. Refer to project specific contract documents.

Property of Sto Corp. All Rights Reserved.

ATTENTION

Sto products are intended for use by qualified professional contractors, not consumers, as a component of a larger construction assembly as specified by a qualified design professional, general contractor or builder. They should be installed in accordance with those specifications and Sto's instructions. Sto Corp. disclaims all, and assumes no, liability for on-site inspections, for its products applied improperly, or by unqualified persons or entities, or as part of an improperly designed or constructed building, for the nonperformance of adjacent building components or assemblies, or for other construction activities beyond Sto's control. Improper use of Sto products or use as part of an improperly designed or constructed larger assembly or building may result in serious damage to Sto products, and to the structure of the building or its components.

STO CORP. DISCLAIMS ALL WARRANTIES EXPRESSED OR IMPLIED EXCEPT FOR EXPLICIT LIMITED WRITTEN WARRANTIES ISSUED TO AND ACCEPTED BY BUILDING OWNERS IN ACCORDANCE WITH STO'S WARRANTY PROGRAMS WHICH ARE SUBJECT TO CHANGE FROM TIME TO TIME. For the fullest, most current information on proper application, clean-up, mixing and other specifications and warranties, cautions and disclaimers, please refer to the Sto Corp. website, www.stocorp.com.

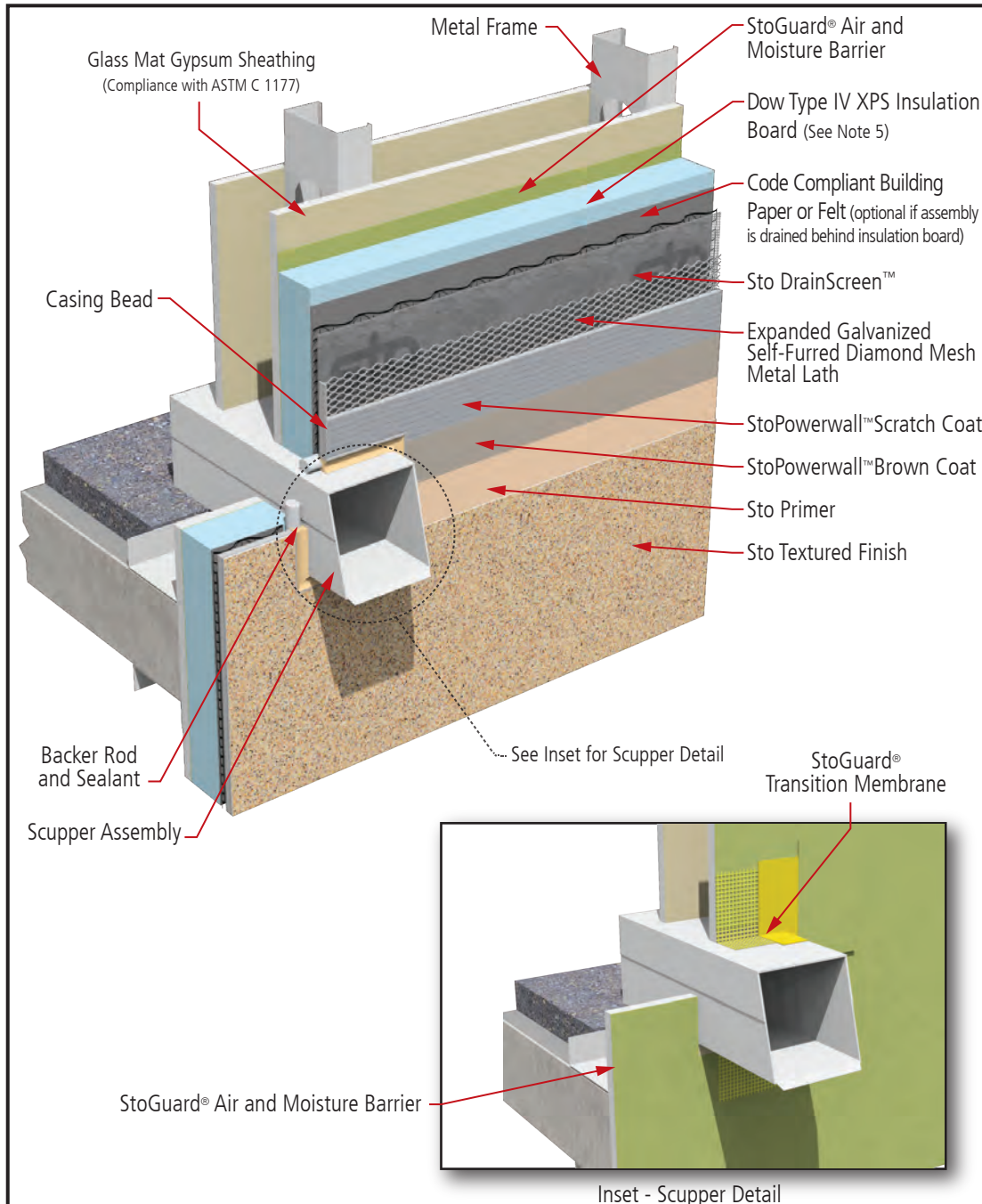
www.stocorp.com



Sto®Powerwall®ci Scupper Penetration Through Wall

Detail No.: 63s.18

Date: March 2016



Notes:

1. StoGuard® Detail Component options:
 - a. StoGuard® RapidFill (joints $\leq 1/4$ inch [6 mm])
2. StoGuard® air and moisture barrier options:
 - a. Sto Gold Coat® (vapor permeable)
 - b. Sto EmeraldCoat® (high perm)
 - c. Sto VaporSeal™ (vapor impermeable)
 - d. Sto AirSeal™ (high perm) (Not for use with Sto Guard Fabric)
3. Refer to product bulletins and Sto Specification S 507x for complete information on Sto products. Refer to StoGuard® Air and Moisture Barrier detail series 20.XX for information on detailing with StoGuard®.
4. IMPORTANT. Refer to Sto Detail 63s.FP for special requirements related to Noncombustible Type construction and Fire-Resistive Rated Construction
5. Provide drainage behind insulation board when appropriate, based on project design and exposure conditions. Use Sto DrainScreen™ installed behind insulation, OR use ribbons of Turbostick adhesive to install maximum 2'x8' (600x2400mm) insulation board, OR use Dow STYROFOAM™ Brand Perimate™ with channels oriented vertically, OR use other code approved method.

IMPORTANT: Components not identified as Sto are furnished by other manufacturers and are not necessarily installed by trades who install the Sto products. Refer to project specific contract documents.

Property of Sto Corp. All Rights Reserved.

ATTENTION

Sto products are intended for use by qualified professional contractors, not consumers, as a component of a larger construction assembly as specified by a qualified design professional, general contractor or builder. They should be installed in accordance with those specifications and Sto's instructions. Sto Corp. disclaims all, and assumes no, liability for on-site inspections, for its products applied improperly, or by unqualified persons or entities, or as part of an improperly designed or constructed building, for the nonperformance of adjacent building components or assemblies, or for other construction activities beyond Sto's control. Improper use of Sto products or use as part of an improperly designed or constructed larger assembly or building may result in serious damage to Sto products, and to the structure of the building or its components.

STO CORP. DISCLAIMS ALL WARRANTIES EXPRESSED OR IMPLIED EXCEPT FOR EXPLICIT LIMITED WRITTEN WARRANTIES ISSUED TO AND ACCEPTED BY BUILDING OWNERS IN ACCORDANCE WITH STO'S WARRANTY PROGRAMS WHICH ARE SUBJECT TO CHANGE FROM TIME TO TIME. For the fullest, most current information on proper application, clean-up, mixing and other specifications and warranties, cautions and disclaimers, please refer to the Sto Corp. website, www.stocorp.com.

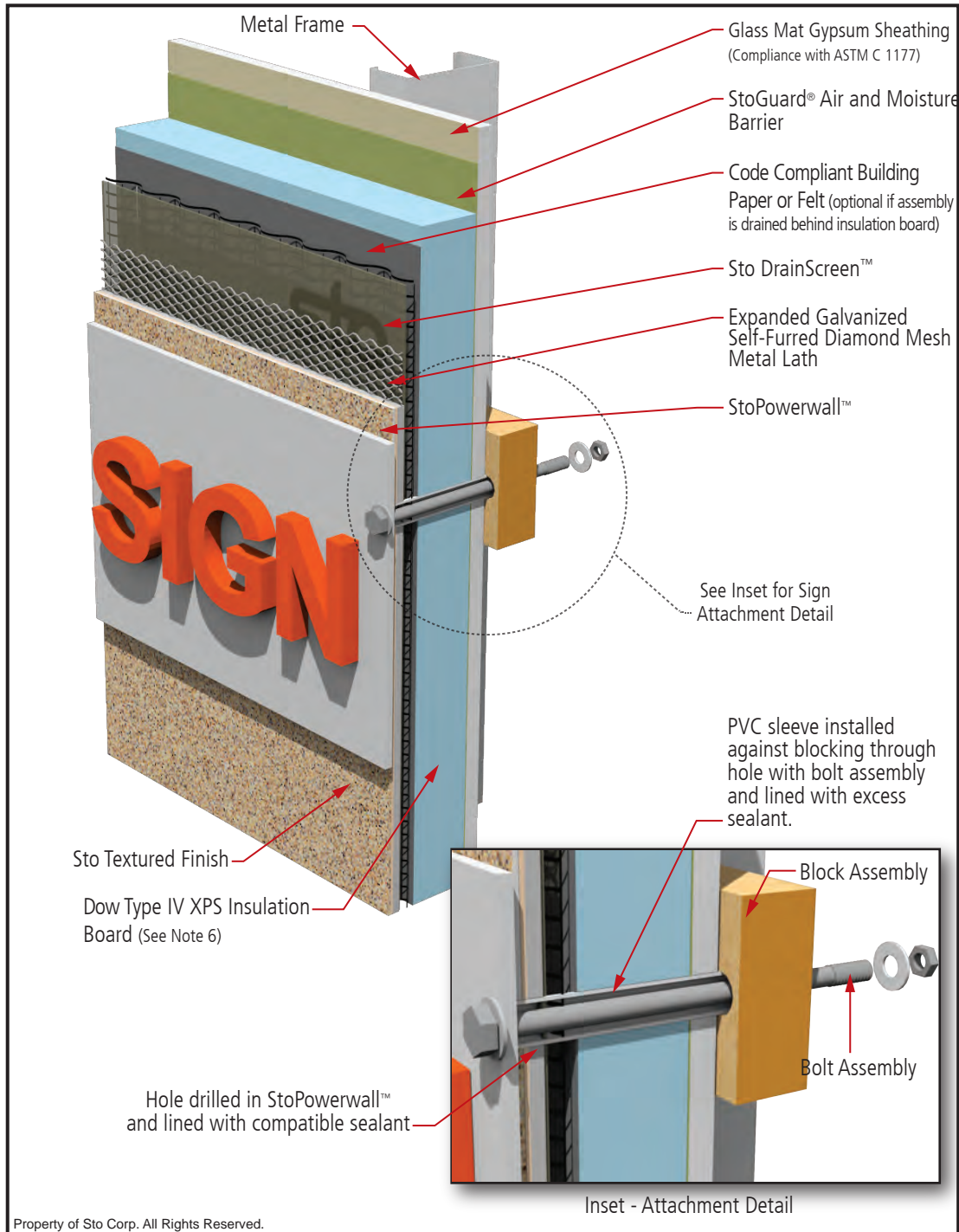
www.stocorp.com



Sto®Powerwall®ci Sign Attachment

Detail No.: 63s.19

Date: March 2016



Notes:

1. StoGuard® air and moisture barrier options:

- a. Sto Gold Coat® (vapor permeable)
- b. Sto EmeraldCoat® (high perm)
- c. Sto VaporSeal™ (vapor impermeable)
- d. Sto AirSeal™ (high perm)
- (Not for use with Sto Guard Fabric)

2. Refer to product bulletins and Sto Specification S 507x for complete information on Sto products. Refer to StoGuard® Air and Moisture Barrier detail series 20.XX for information on detailing with StoGuard®.

5. IMPORTANT: Refer to Sto Detail 63s.FP for special requirements related to Noncombustible Type construction and Fire-Resistive Rated Construction

6. Provide drainage behind insulation board when appropriate, based on project design and exposure conditions. Use Sto Drainscreen™ installed behind insulation, OR use ribbons of Turbostick adhesive to install maximum 2'x8' (600x2400mm) insulation board, OR use Dow STYROFOAM™ Brand Perimate™ with channels oriented vertically, OR use other code approved method.

IMPORTANT: Components not identified as Sto are furnished by other manufacturers and are not necessarily installed by trades who install the Sto products. Refer to project specific contract documents.

www.stocorp.com

ATTENTION

Sto products are intended for use by qualified professional contractors, not consumers, as a component of a larger construction assembly as specified by a qualified design professional, general contractor or builder. They should be installed in accordance with those specifications and Sto's instructions. Sto Corp. disclaims all, and assumes no, liability for on-site inspections, for its products applied improperly, or by unqualified persons or entities, or as part of an improperly designed or constructed building, for the nonperformance of adjacent building components or assemblies, or for other construction activities beyond Sto's control. Improper use of Sto products or use as part of an improperly designed or constructed larger assembly or building may result in serious damage to Sto products, and to the structure of the building or its components.

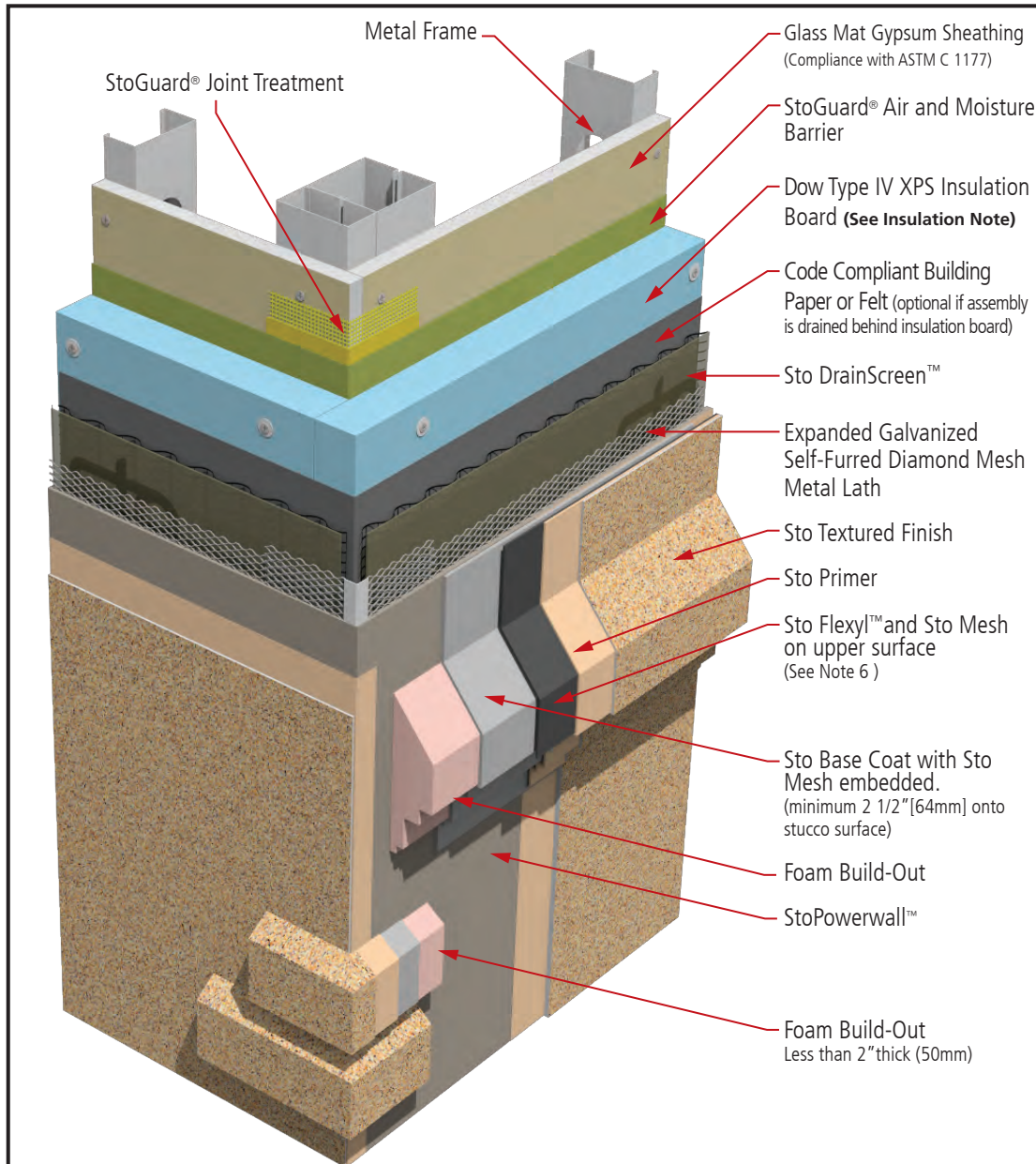
STO CORP. DISCLAIMS ALL WARRANTIES EXPRESSED OR IMPLIED EXCEPT FOR EXPLICIT LIMITED WRITTEN WARRANTIES ISSUED TO AND ACCEPTED BY BUILDING OWNERS IN ACCORDANCE WITH STO'S WARRANTY PROGRAMS WHICH ARE SUBJECT TO CHANGE FROM TIME TO TIME. For the fullest, most current information on proper application, clean-up, mixing and other specifications and warranties, cautions and disclaimers, please refer to the Sto Corp. website, www.stocorp.com.



Sto®Powerwall®ci Foam Buildouts

Detail No.: 63s.20

Date: March 2016



Insulation Note: Provide drainage behind insulation board when appropriate, based on project design and exposure conditions. Use Sto Drainscreen™ installed behind insulation, OR use ribbons of Turbostick adhesive to install maximum 2'x8' (600x2400mm) insulation board, OR use Dow STYROFOAM™ Brand Perimate™ with channels oriented vertically, OR use other code approved method.

Property of Sto Corp. All Rights Reserved.

Notes:

- StoGuard® Joint Treatment options:
 - StoGuard® RapidFill (joints \leq 1/4 inch [6 mm])
 - Sto Gold Fill® with StoGuard® Mesh (joints \leq 1/8 inch [3 mm])
 - StoGuard® Fabric with StoGuard® air and moisture barrier (joints \leq 1/8 inch [3 mm])
- StoGuard® air and moisture barrier options:
 - Sto Gold Coat® (vapor permeable)
 - Sto EmeraldCoat® (high perm)
 - Sto VaporSeal™ (vapor impermeable)
 - Sto AirSeal™ (high perm) (Not for use with Sto Guard Fabric)
- The maximum thickness of foam plastic insulation allowed by code is typically 4" (100mm).
- The exposed surface must have a minimum slope of 1:2 (27°). In locations where ice and snow may accumulate, increase the slope.
- Provide Sto Flexyl™ and mesh on upper surfaces of foam features projecting more than 2" (50mm) from the stucco surface. Feather edges into stucco.
- Refer to product bulletins and Sto Specification S 507x for complete information on Sto products. Refer to StoGuard® Air and Moisture Barrier detail series 20.XX for information on detailing with StoGuard®.
- IMPORTANT. Refer to Sto Detail 63s.FP for special requirements related to Noncombustible Type construction and Fire-Resistive Rated Construction

IMPORTANT: Components not identified as Sto are furnished by other manufacturers and are not necessarily installed by trades who install the Sto products. Refer to project specific contract documents.

ATTENTION

Sto products are intended for use by qualified professional contractors, not consumers, as a component of a larger construction assembly as specified by a qualified design professional, general contractor or builder. They should be installed in accordance with those specifications and Sto's instructions. Sto Corp. disclaims all, and assumes no, liability for on-site inspections, for its products applied improperly, or by unqualified persons or entities, or as part of an improperly designed or constructed building, for the nonperformance of adjacent building components or assemblies, or for other construction activities beyond Sto's control. Improper use of Sto products or use as part of an improperly designed or constructed larger assembly or building may result in serious damage to Sto products, and to the structure of the building or its components.

STO CORP. DISCLAIMS ALL WARRANTIES EXPRESSED OR IMPLIED EXCEPT FOR EXPLICIT LIMITED WRITTEN WARRANTIES ISSUED TO AND ACCEPTED BY BUILDING OWNERS IN ACCORDANCE WITH STO'S WARRANTY PROGRAMS WHICH ARE SUBJECT TO CHANGE FROM TIME TO TIME. For the fullest, most current information on proper application, clean-up, mixing and other specifications and warranties, cautions and disclaimers, please refer to the Sto Corp. website, www.stocorp.com.

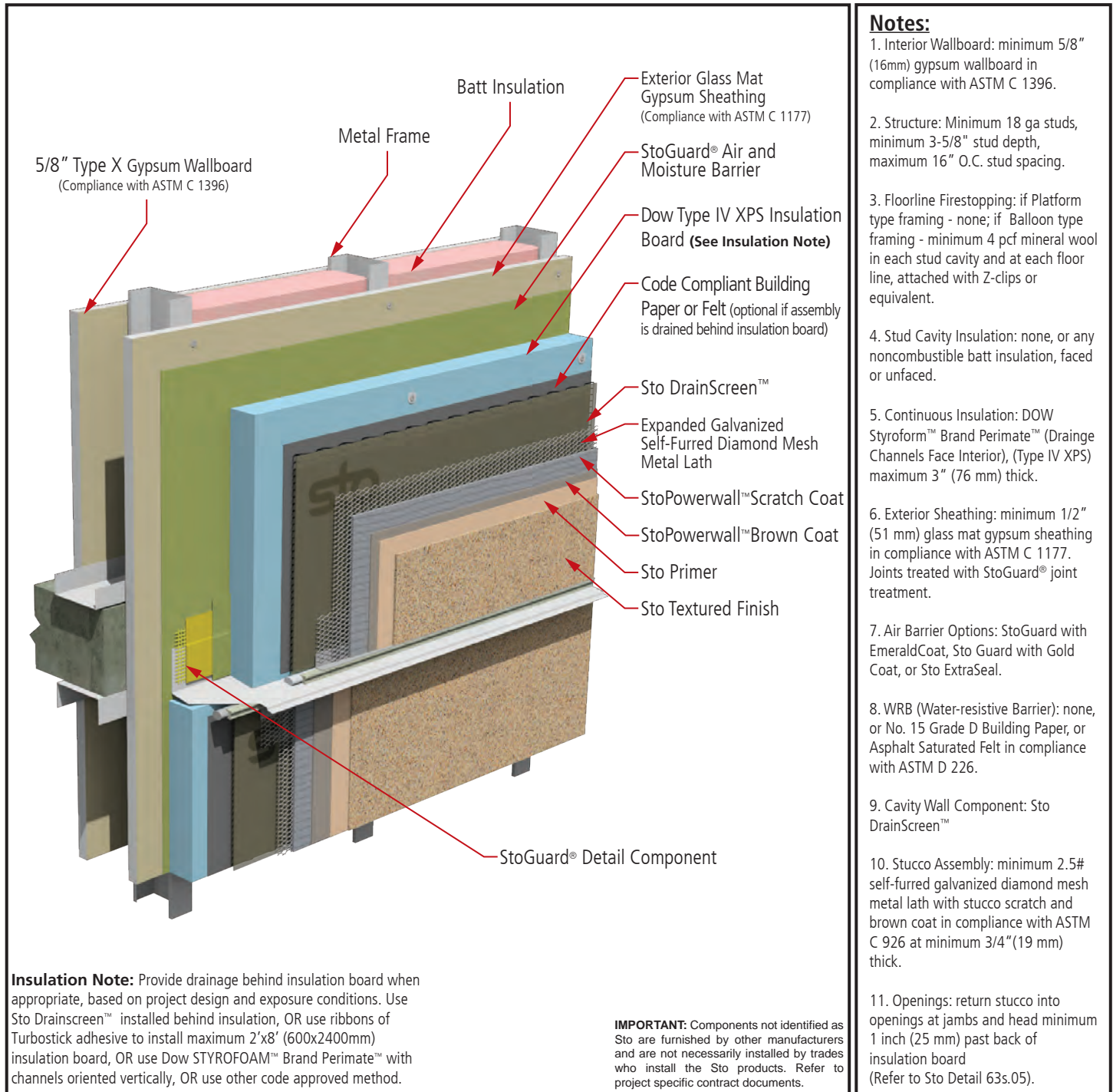
www.stocorp.com


Sto Powerwall®ci

Fire Protection - Noncombustible Type Construction (NFPA 285) and
1 Hour Non-Load Bearing Fire-Resistive Rated Wall Assembly (ASTM E 119)

Detail No.: 63s.FP

Date: March 2016



ATTENTION

Sto products are intended for use by qualified professional contractors, not consumers, as a component of a larger construction assembly as specified by a qualified design professional, general contractor or builder. They should be installed in accordance with those specifications and Sto's instructions. Sto Corp. disclaims all, and assumes no, liability for on-site inspections, for its products applied improperly, or by unqualified persons or entities, or as part of an improperly designed or constructed building, for the nonperformance of adjacent building components or assemblies, or for other construction activities beyond Sto's control. Improper use of Sto products or use as part of an improperly designed or constructed larger assembly or building may result in serious damage to Sto products, and to the structure of the building or its components.

STO CORP. DISCLAIMS ALL WARRANTIES EXPRESSED OR IMPLIED EXCEPT FOR EXPLICIT LIMITED WRITTEN WARRANTIES ISSUED TO AND ACCEPTED BY BUILDING OWNERS IN ACCORDANCE WITH STO'S WARRANTY PROGRAMS WHICH ARE SUBJECT TO CHANGE FROM TIME TO TIME. For the fullest, most current information on proper application, clean-up, mixing and other specifications and warranties, cautions and disclaimers, please refer to the Sto Corp. website www.stocorp.com.

Property of Sto Corp. All Rights Reserved.

www.stocorp.com